



UNIVERSIDADE
CATÓLICA
PORTUGUESA



CATÓLICA LEARNING
INNOVATION LAB | CLIL

Peer Learning Activity 3: Towards an Interconnected EHEA by 2030

Diana Soares

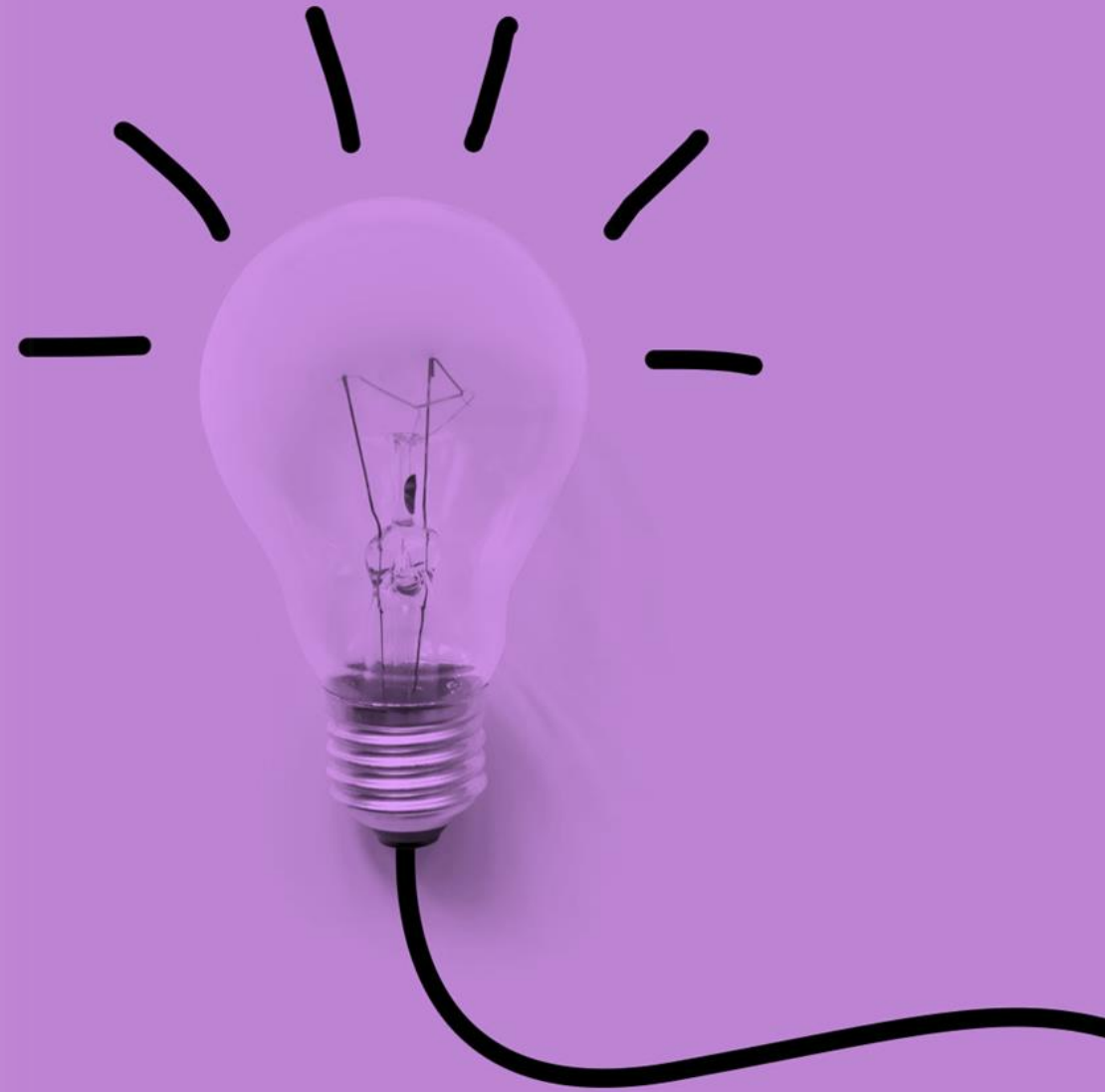
Faculty of Education and Psychology | Universidade Católica Portuguesa PORTUGAL



What?

How?

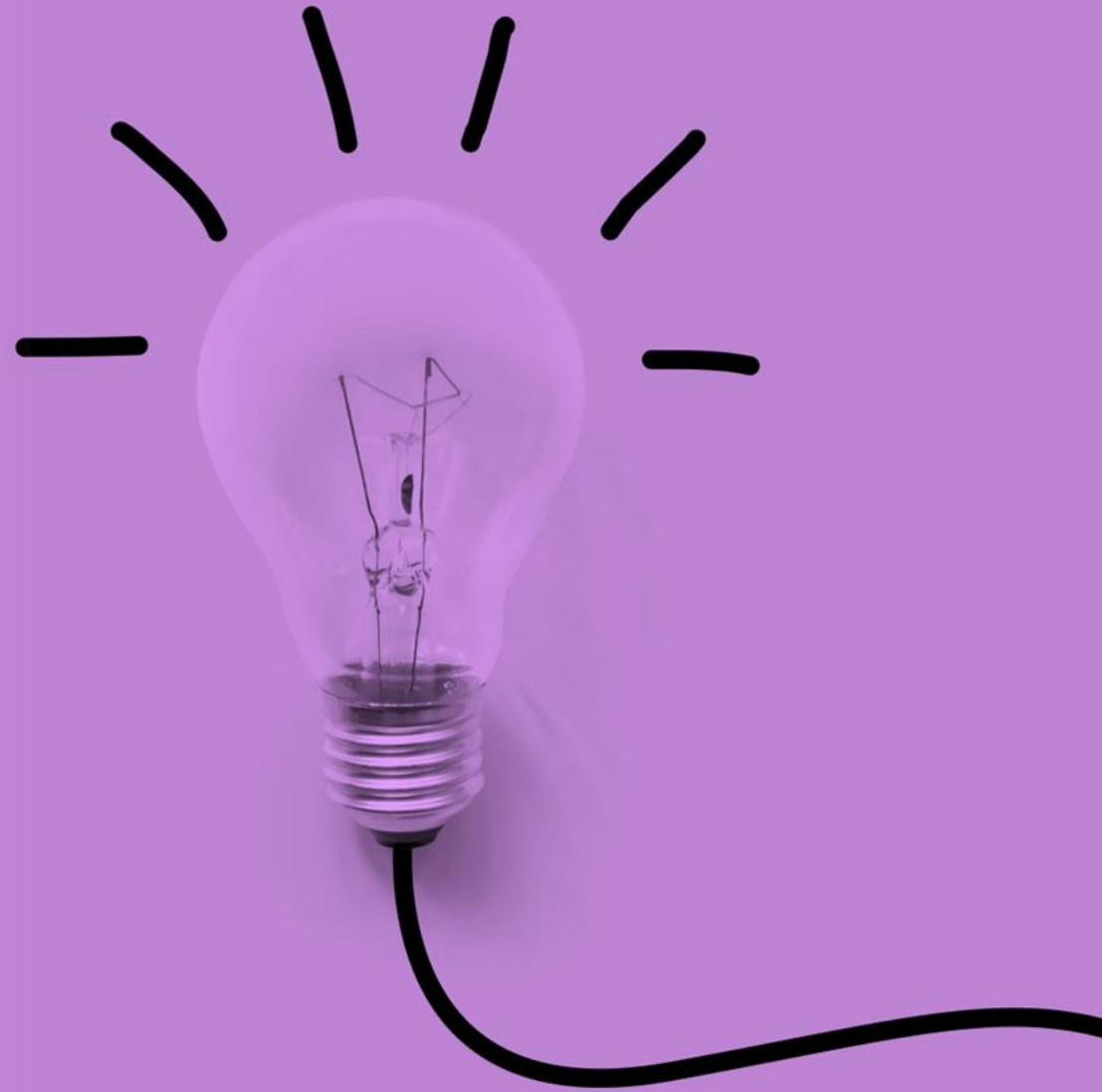
Who?



What?

How?

Who?



Católica Learning Innovation Lab

a collaborative Lab for Teaching and Learning Innovation

A “change laboratory” aiming at identifying, experimenting, and testing innovative pedagogical approaches, in a logic of cross-disciplinary collaboration and community engagement.

(Botha, 2018)



Católica Learning Innovation Lab

a collaborative Lab for Teaching and Learning Innovation

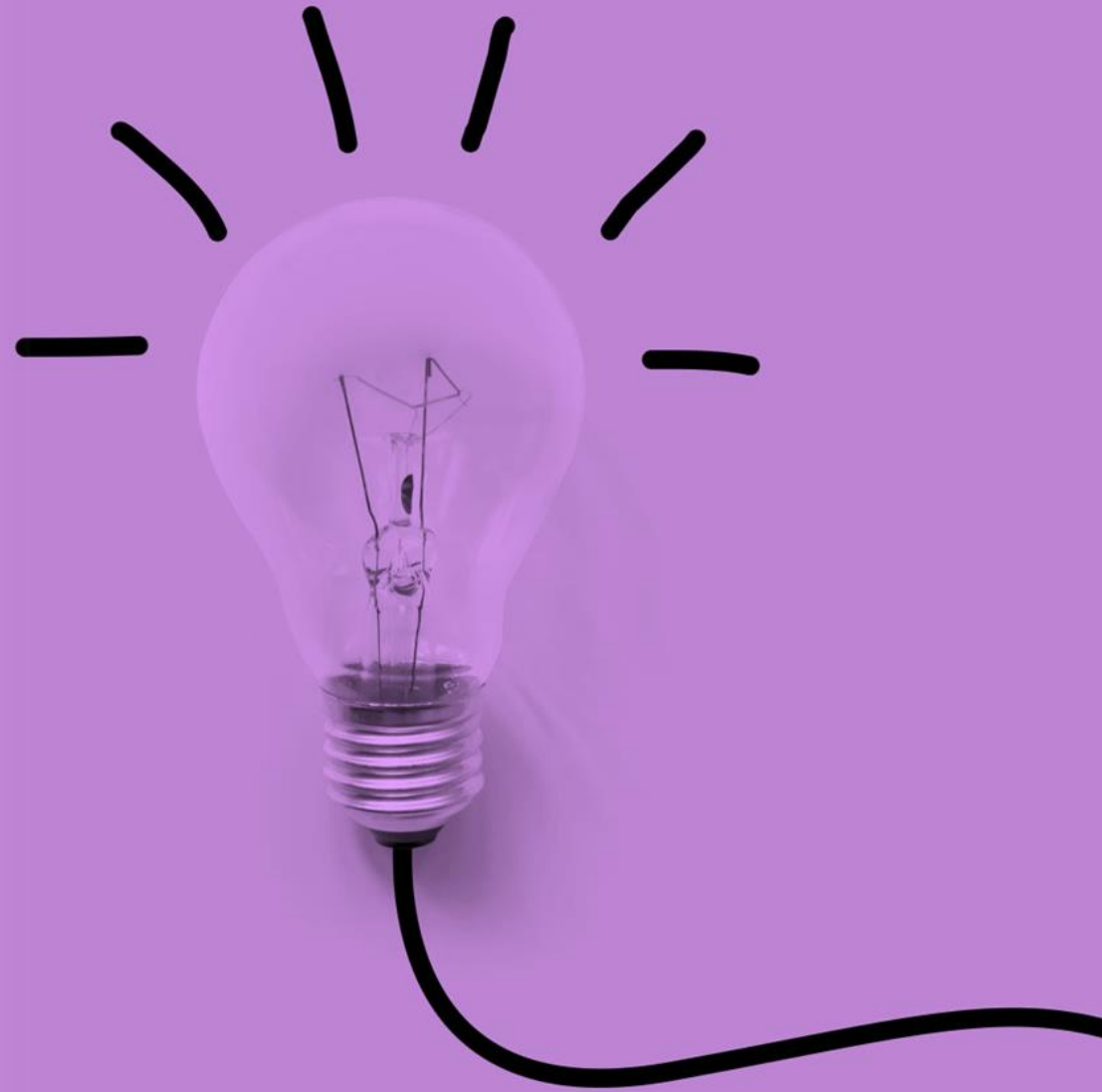
A “change laboratory” aiming at identifying, experimenting, and testing innovative pedagogical approaches, in a logic of cross-disciplinary collaboration and community engagement.
(Botha, 2018)



What?

How?

Who?



● Workflow

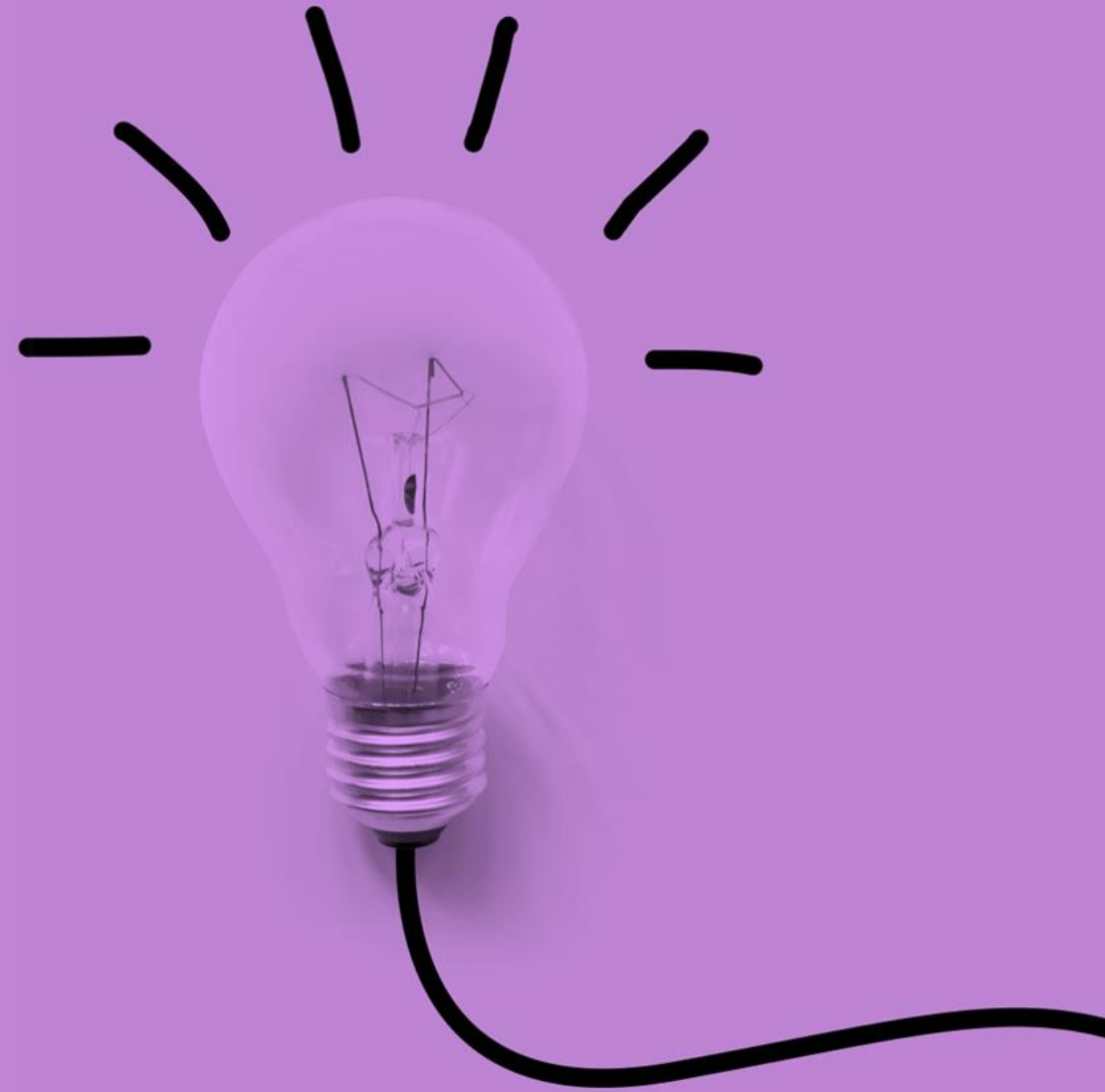


September 2021 – ongoing

What?

How?

Who?



• Communities as Learning Spaces

Top-Team

1

Faculty

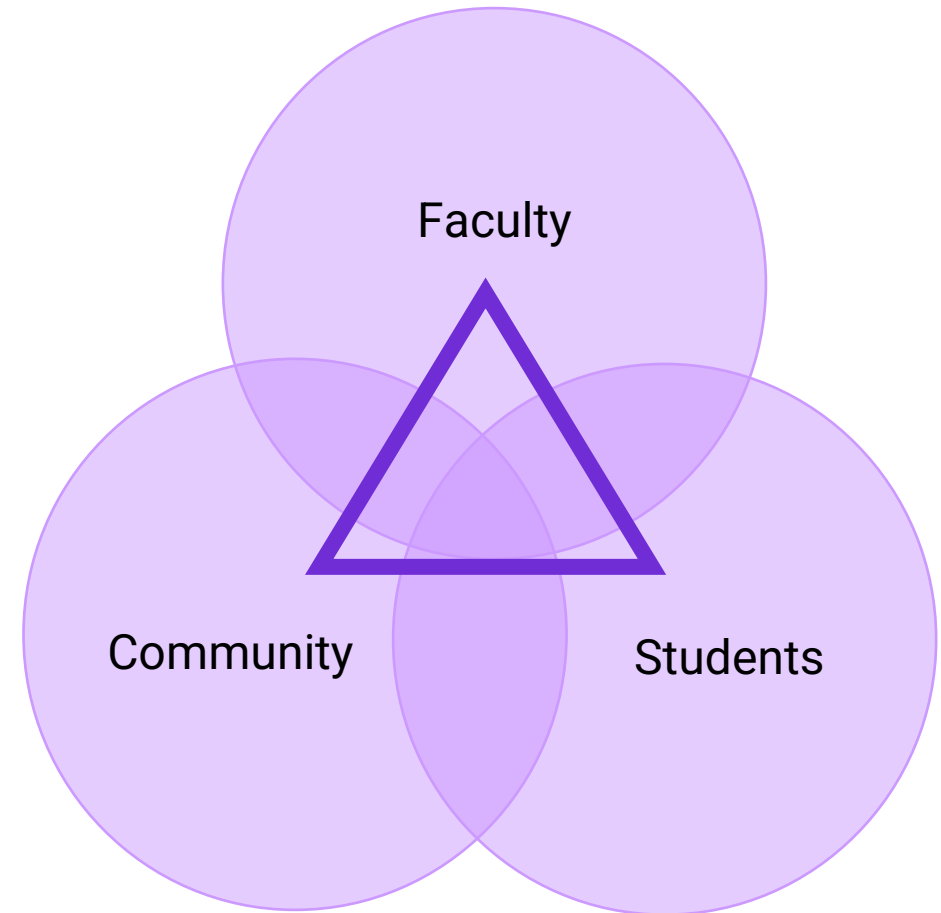
Education, Psychology, Law, Health Sciences, Technology, Arts, Theology, Philosophy, Economics, Business, and Engineering

2

Students and their representatives Community Strategic Partners

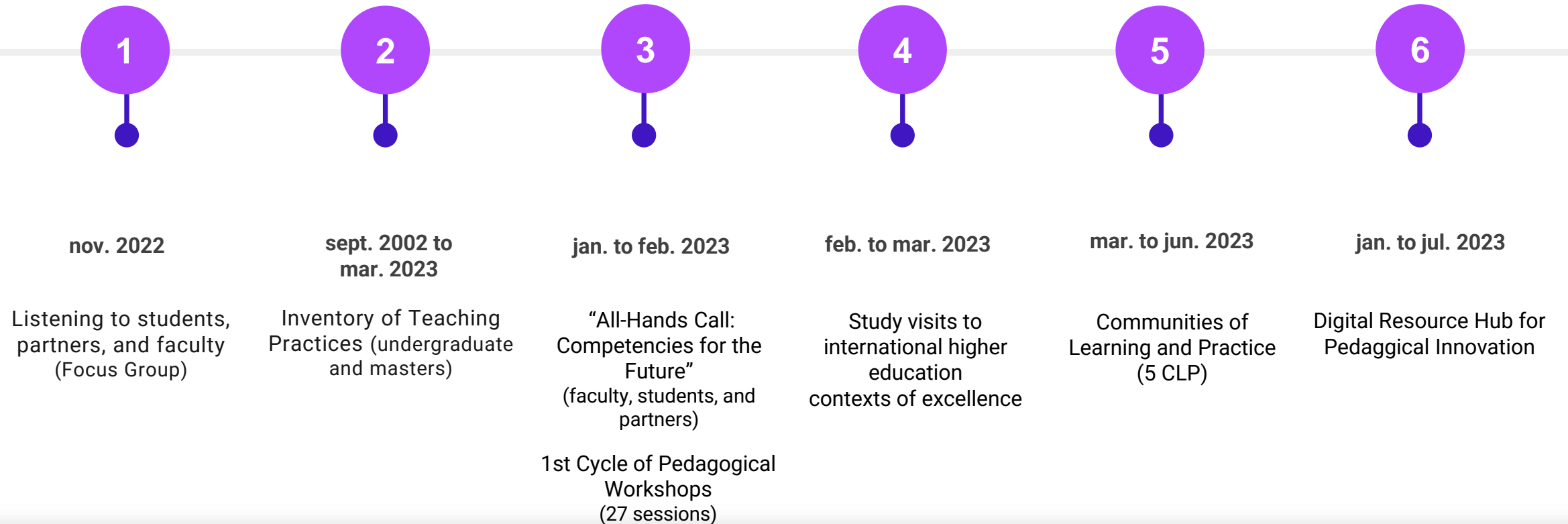
3

A national project – all UCP campi (UCP Strategic Development Plan)



● Some outputs

2022/2023



Community as Learning Spaces

(Bhagwan, 2020;
Raykov & Taylor, 2021)

“ *Interconnectivity in higher education can help to create a more dynamic and integrated educational landscape, with greater opportunities for collaboration, innovation, and Excellence* ”

Peer Learning Activity 3, EUA (adapt.)

Scholarship of Engagement

Boyer (1996)

[Presentation vídeo](#) | Universidade Católica Portuguesa

[Video Presentation](#) | Católica Learning Innovation Lab

[Site](#) | Católica Learning Innovation Lab

[Personal Page](#) | Diana Soares



CATÓLICA LEARNING INNOVATION LAB | CLIL

Obrigada | Thank you!