



**Fighting for  
students' rights  
since 1982**



Co-funded by the  
Erasmus+ Programme  
of the European Union



The European Students' Union (ESU), Mundo-Madou. Avenue des Arts 7/8, 1210 Bruxelles

# What is the Social Dimension?

- The means by which we:
  - widen access to HE
  - ensure it is representative of the diverse society
  - Fulfil responsibility to extend social equality
  - Ensure that those who enter HE are supported to achieve and succeed
- All parameters that define an inclusive environment in HEIs



National Union of Students + Add to myFT

## Students battle to stay afloat in cost of living crisis

Experts warn of undergraduate poverty and an increased gap between rich and poor

'Worst student housing crisis we've ever seen': NUIG suggests students move to Tuam or Spiddal

The Observer  
Student housing

## 'Devastated' UK students forced to live in neighbouring cities in university accommodation crisis

A surge in the number of 18-year-olds combined with a lack of housing and landlords switching to Airbnb create a perfect storm



Anna  
Fazackerley and  
Eve Livingston

Sat 10 Sep 2022 16.00  
BST



## Does the Government Even Want to Fix the Student Accommodation Crisis?

The scramble for housing occurs every September, but this year was considerably worse. Solving the problem is now a matter of political will, writes Caoimhe Weakliam.

Caoimhe Weakliam  
OPINION EDITOR



The two main news stories at the forefront of student housing affairs this week appear side by side as a strange oxymoron. Firstly, the news that Dublin City Council granted permission for over 1,000 student beds to be offered as short-term lets this year. Accompanying this are grim accounts of a sleepout organised by the Union of Students



## Nesten 10.000 studenter mangler et sted å bo her står feltsengene klare

På samme dag som studietrøien starter står 9583 studenter fremdeles i studentboligvis. I Stavanger har de nødløsningen klar.



Lise-Marie Kvalseth  
Stavanger

Uppgjør til Østingen  
Publisert 25. aug kl. 17:00

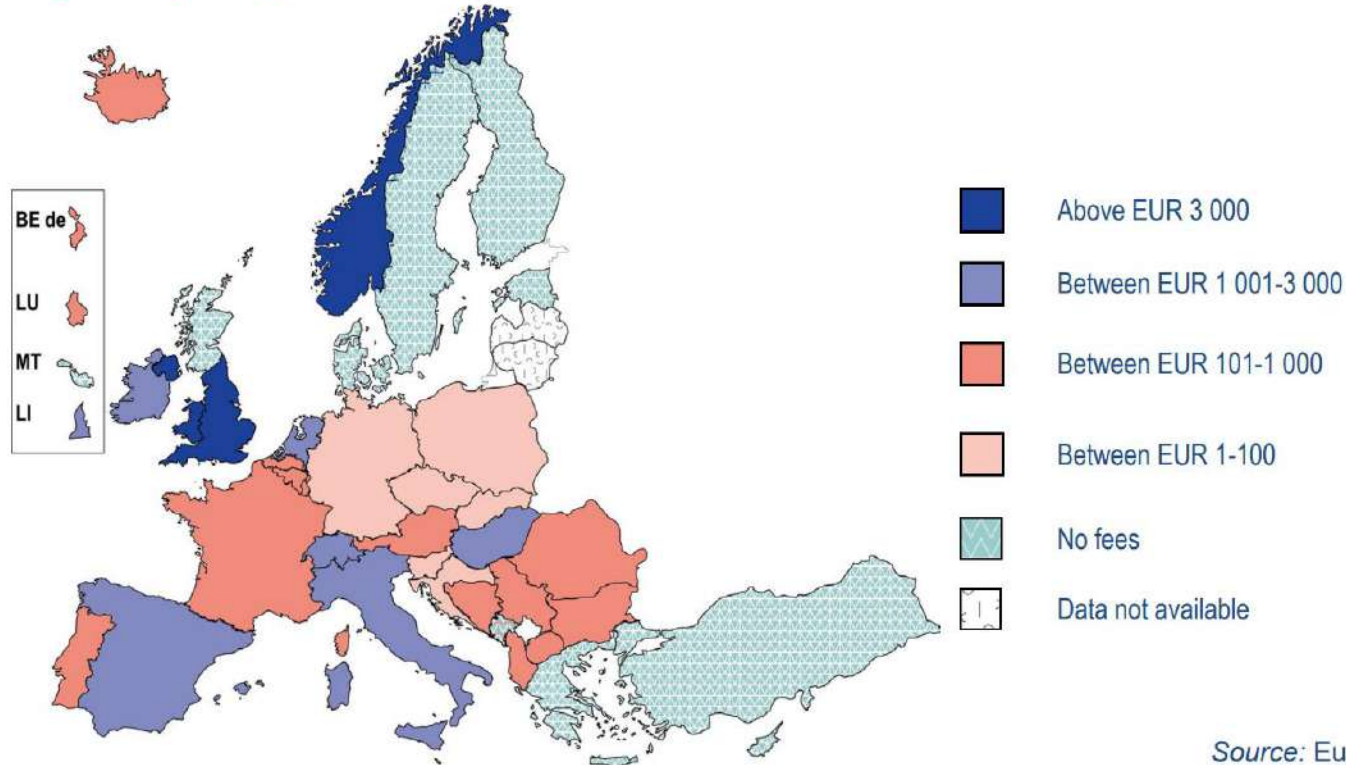


## Student Housing Crisis in Eastern Europe



**Does your country  
have study fees?**

**Figure 2: Most common annual fees in first-cycle higher education, among full-time home fee-paying students progressing normally through their studies, 2020/21**

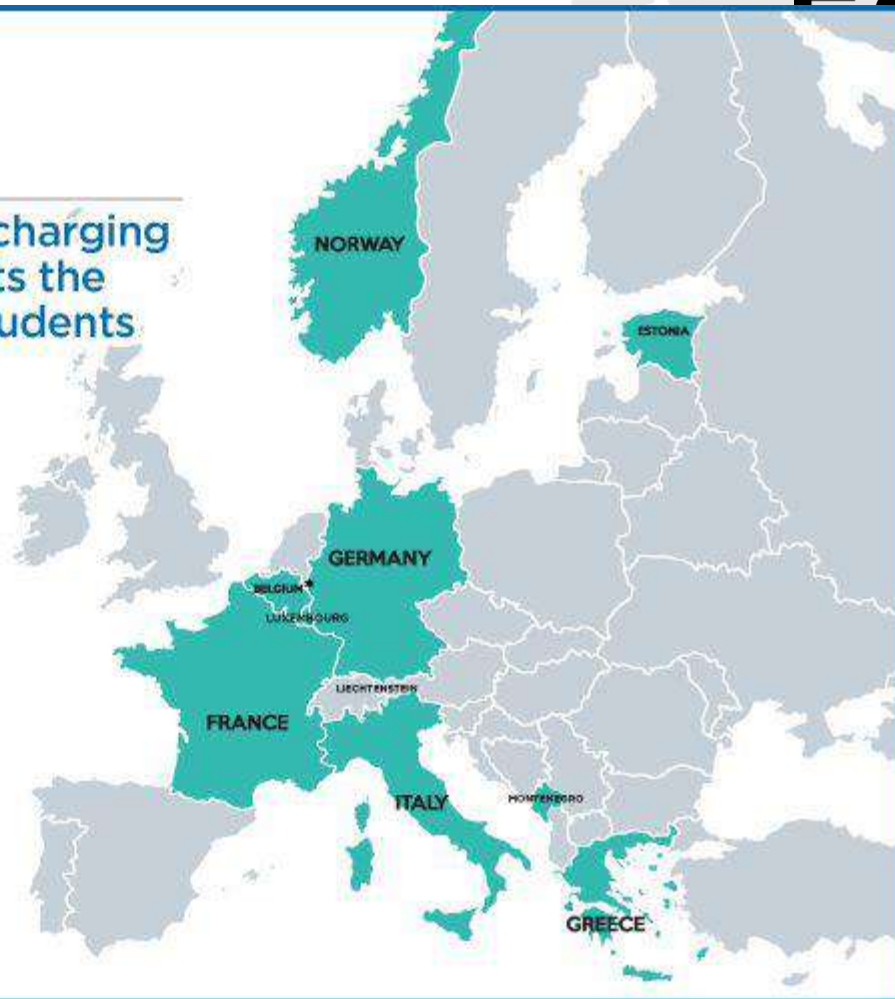


Source: Eurydice.

**Do international  
students pay the same  
study fees as national  
students?**

FIGURE 1

European countries charging  
non-EU/EEA students the  
same fees as local students



\*German speaking Belgium

**Do students receive discounts or free  
accommodation and transportation in your  
country?**



Figure B8.2 [↓](#)

## Costs for accommodation, food, and transportation – students not living with parents

Expenses paid by students and others, monthly expenses as a share of total expenses including transfers in kind (in %)



**Data source:** EUROSTUDENT VII, F.3, F.68, F.142, and F.143. **No data:** AL.

**Data collection:** Spring 2019 except CH, FR (spring 2020 – reference period before COVID-19 pandemic), DE (summer 2016), IT, PT, RO, TR (reference period during COVID-19 pandemic in 2020 and/or 2021). See Appendix C3 for details.

**EUROSTUDENT question(s):** 4.17 What are your average expenses for the following items during the current lecture period?

**Note(s):** Included are expenses of parents/partner/others in favour of the students as well as their provision of goods and services (= transfers in kind).

**Deviations from EUROSTUDENT survey conventions:** DE, FR, RO.

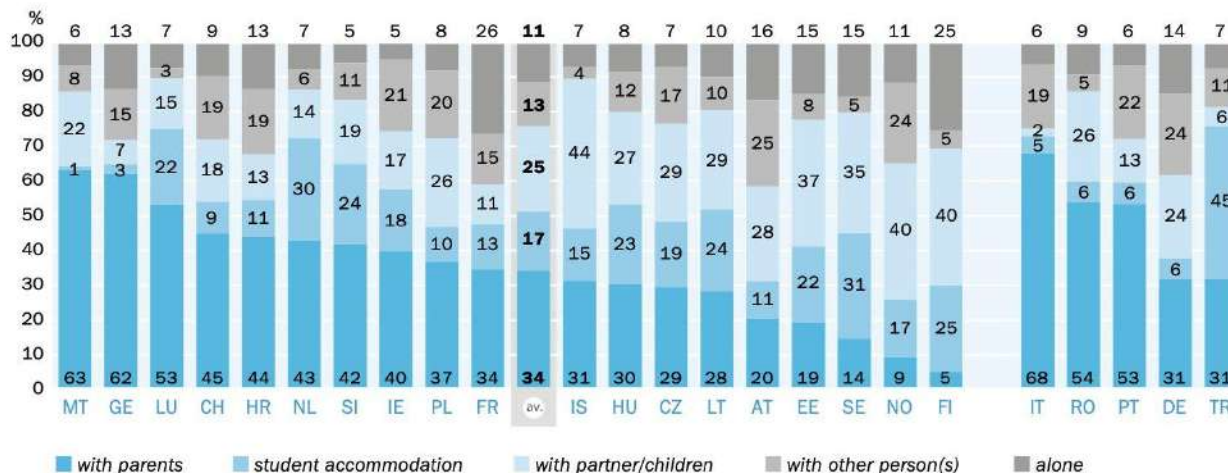
**Deviations from EUROSTUDENT standard target group:** DE, IE, IT, PL.

**Do students in your country tend to live at home during their studies or move out?**

Figure B9.2 [↓](#)

## Students' housing situation

Share of students (in %)



**Data source:** EUROSTUDENT VII, E.2. **No data:** AL, DK.

**Data collection:** Spring 2019 except CH, FR (spring 2020 – reference period before COVID-19 pandemic), DE, IT, PT, RO, TR (reference period during COVID-19 pandemic in 2020 and/or 2021). See Appendix C3 for details.

**EUROSTUDENT question(s):** 4.1 Who do you live with during the current lecture period (Monday to Friday)?, 4.2 Do you live in a student accommodation?

**Deviations from EUROSTUDENT survey conventions:** FR, IT.

**Deviations from EUROSTUDENT standard target group:** DE, IE, IT, PL.

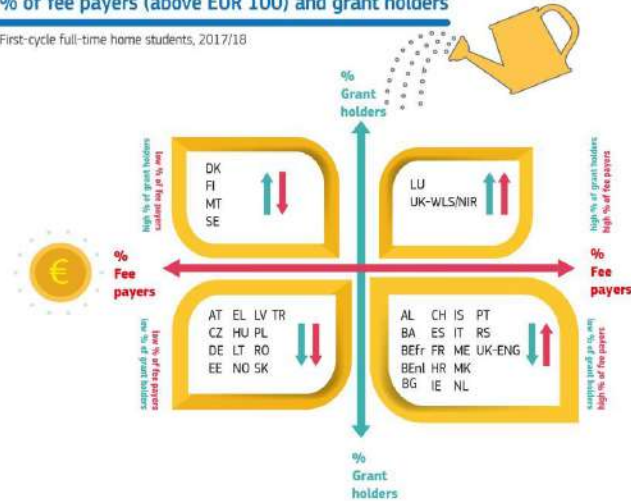
**Does your government provide a student  
grant or loan system?**

# National Student Fee and Support Systems in European Higher Education



## % of fee payers (above EUR 100) and grant holders

First-cycle full-time home students, 2017/18



## Most common annual fees

First-cycle full-time home fee-paying students progressing normally through their studies, 2018/19

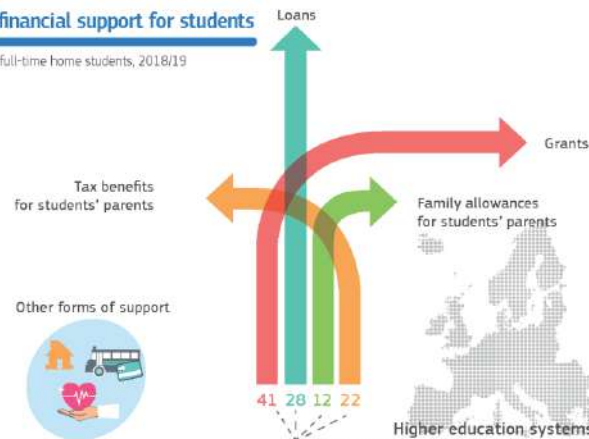


# National Student Fee and Support Systems in European Higher Education



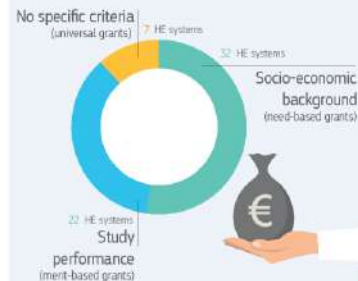
## Public financial support for students

First-cycle full-time home students, 2018/19



## Criteria for allocation of study grants

First-cycle full-time home students, 2018/19



## Most common annual grant amounts

Universal or need-based grants, first-cycle full-time home students, 2017/18



For more information read the Eurydice report:  
National Student Fee and Support Systems in  
European Higher Education - 2018/19

<https://ec.europa.eu/eurydice>

Figure 7.7

## Recipients of family/partner contributions and importance of income source – students not living with parents

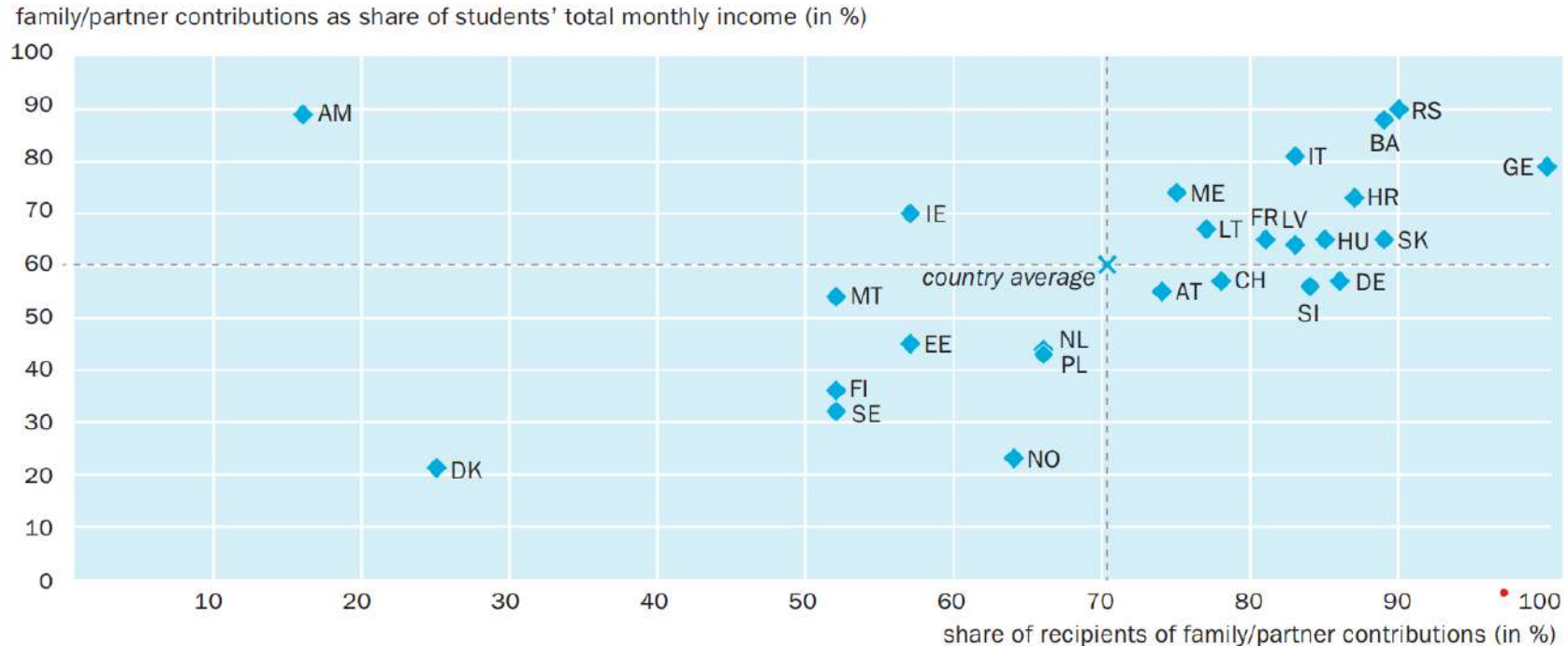
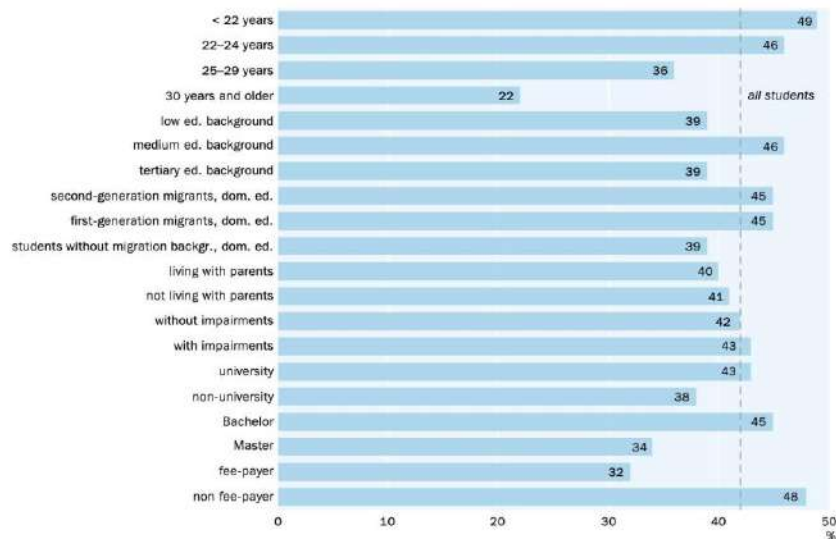


Figure B7.6

## Recipients of national public student support

Students receiving national public student support by socio-demographic and study-related characteristics  
Share of students on cross-country average (in %)



**Data source:** EUROSTUDENT VII, G.105. **No data:** AL, DK, PT; low and medium educational background; DE; second-generation migrants; SE; first-generation migrants; DE, SE; students without a migration background; SE. **Too few cases:** first-generation migrants; EE, LT, SI.

**Data collection:** Spring 2019 except CH, FR (spring 2020 – reference period before COVID-19 pandemic), DE (summer 2016), IT, RO, TR (reference period during COVID-19 pandemic in 2020 and/or 2021). See Appendix C3 for details.

**EUROSTUDENT question(s):** 4.16 What is the average monthly amount available to you in cash or via bank transfers from the following sources during the current lecture period?

**Note(s):** The dotted line represents the cross-country average for all students receiving national public student support. Non-universities do not exist in Iceland, Italy, Romania, or Sweden.

**Deviations from EUROSTUDENT survey conventions:** TR.

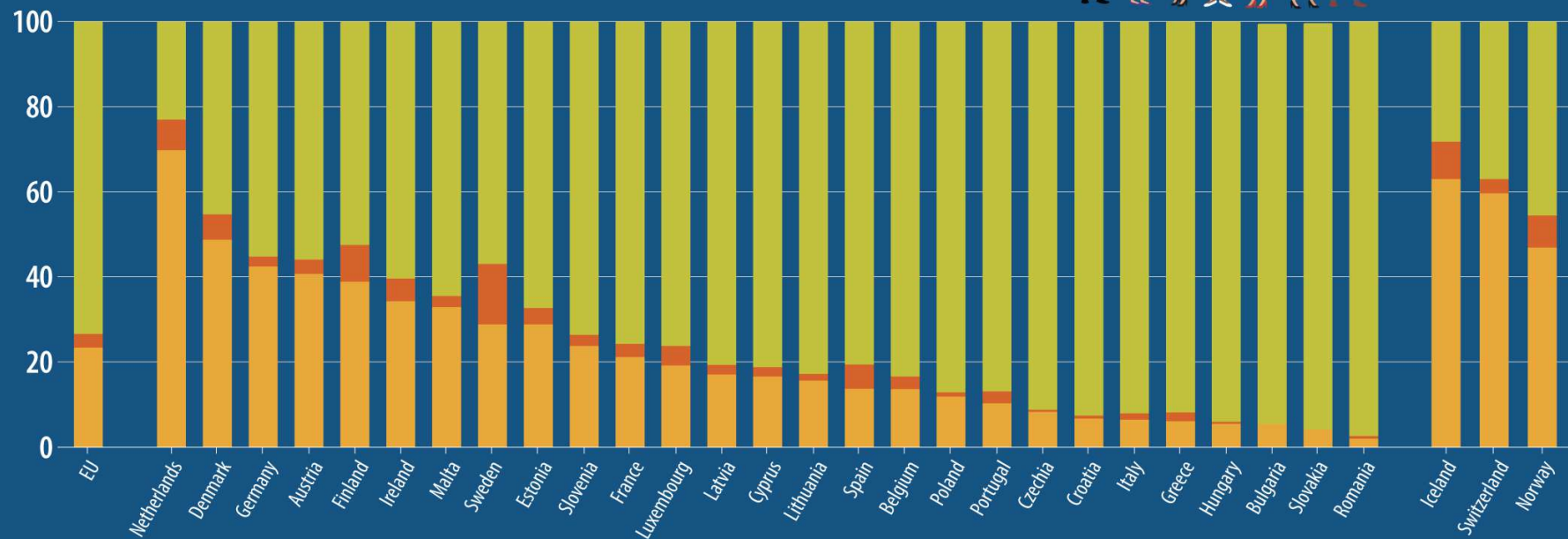
**Deviations from EUROSTUDENT standard target group:** DE, IE, IT, PL.



## Young people in formal education by labour market status, 2021

(% of the population in formal education, age group 15-29)

Employed Unemployed Outside the labour force



Bulgaria and Slovakia: data on unemployed people not shown due to very low reliability.

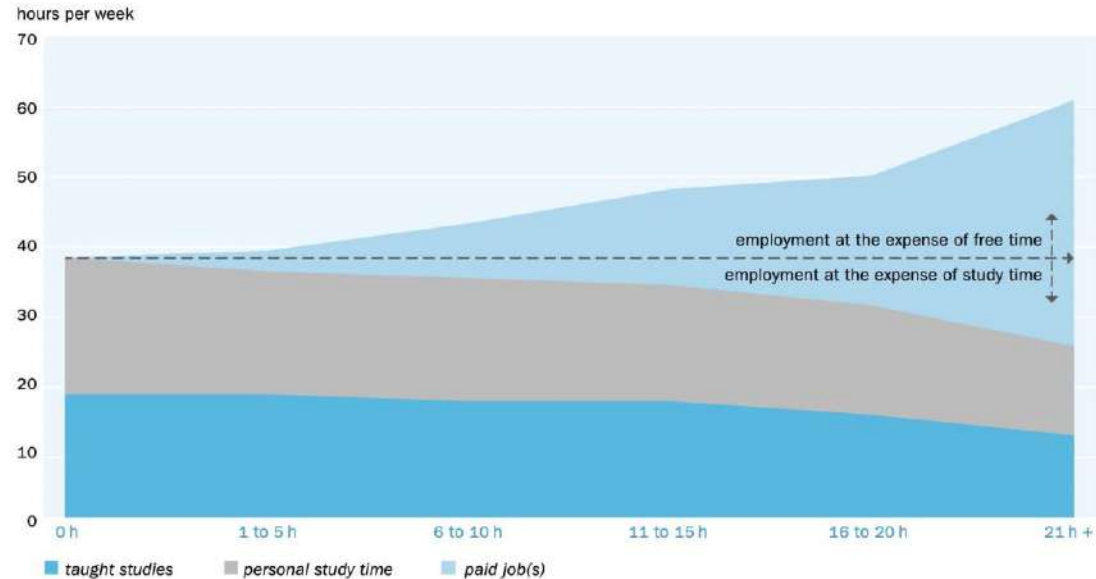
Croatia, Cyprus, Lithuania, Hungary, Malta and Romania: data on unemployed people with low reliability.

Outside the labour force: neither employed nor unemployed.

Figure B5.3 [↓](#)

## Time spent on taught studies, personal study time, and paid jobs by time spent on paid jobs during term time

In hours per week (mean), unweighted cross-country average



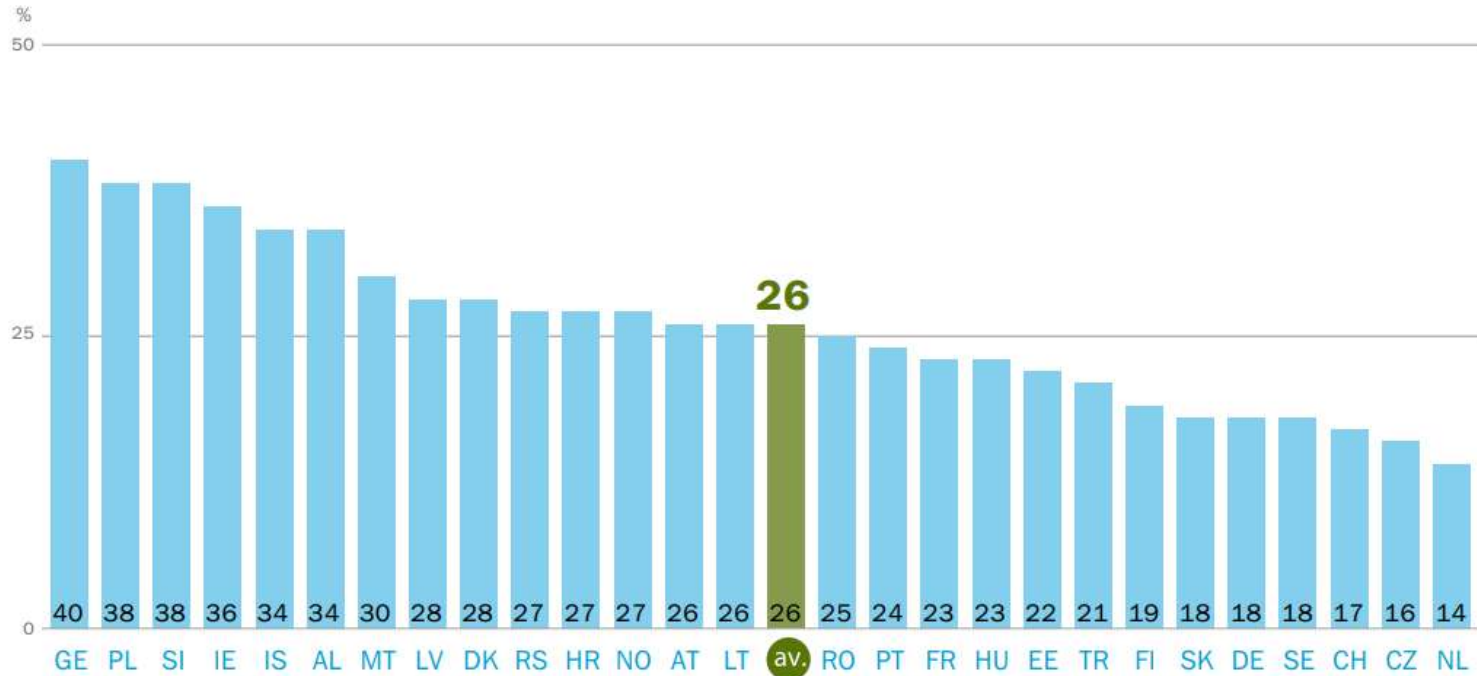
**Data source:** EUROSTUDENT VII, H.26, H.32, H.38.

**EUROSTUDENT question(s):** 3.4. How many hours do you spend in taught courses and on personal study time in a typical week during the current #lecture period? 4.6. How many hours do you spend on your paid job(s) in a typical week in the current #lecture period?

**Data collection:** Spring 2019 except CH, FR (spring 2020 – reference period before COVID-19 pandemic), DE, IT, PT, RO, TR (reference period during COVID-19 pandemic in 2020 and/or 2021). See Appendix C3 for details.

**Deviations from EUROSTUDENT survey conventions:** CH, FR.

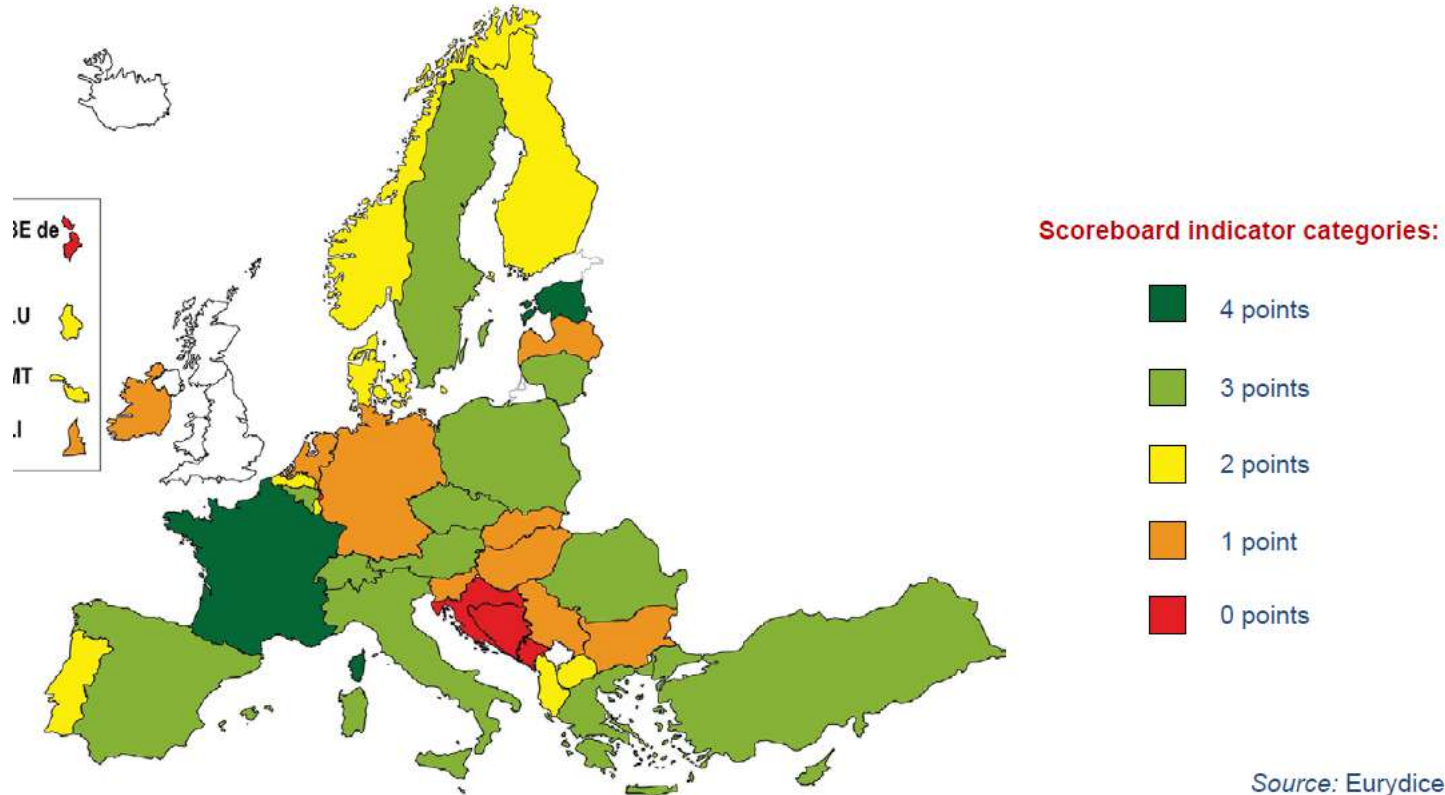
**Deviations from EUROSTUDENT standard target group:** DE, IE, IT, PL.



13 | Students with (very) serious financial difficulties (self-assessment, share of students in %)

**Do students in your country receive free  
access to psychological services?**

**Figure 5.6: Scoreboard indicator 5: Psychological counselling systems to support both potential and enrolled students, 2020/2021**



# Types of measures

- Universal/category based (for disadvantaged, vulnerable, underrepresented groups and which)
- Before entry in HE/during entry in HE/during progress/after graduation
- Pecuniary/non-pecuniary
- Proactive/Lack of barriers
- European/national/institutional/sub-institutional level
- Horizontal (including a coherent set of social dimension policies)/Transversal (underlying within policies – learning and teaching, research etc)

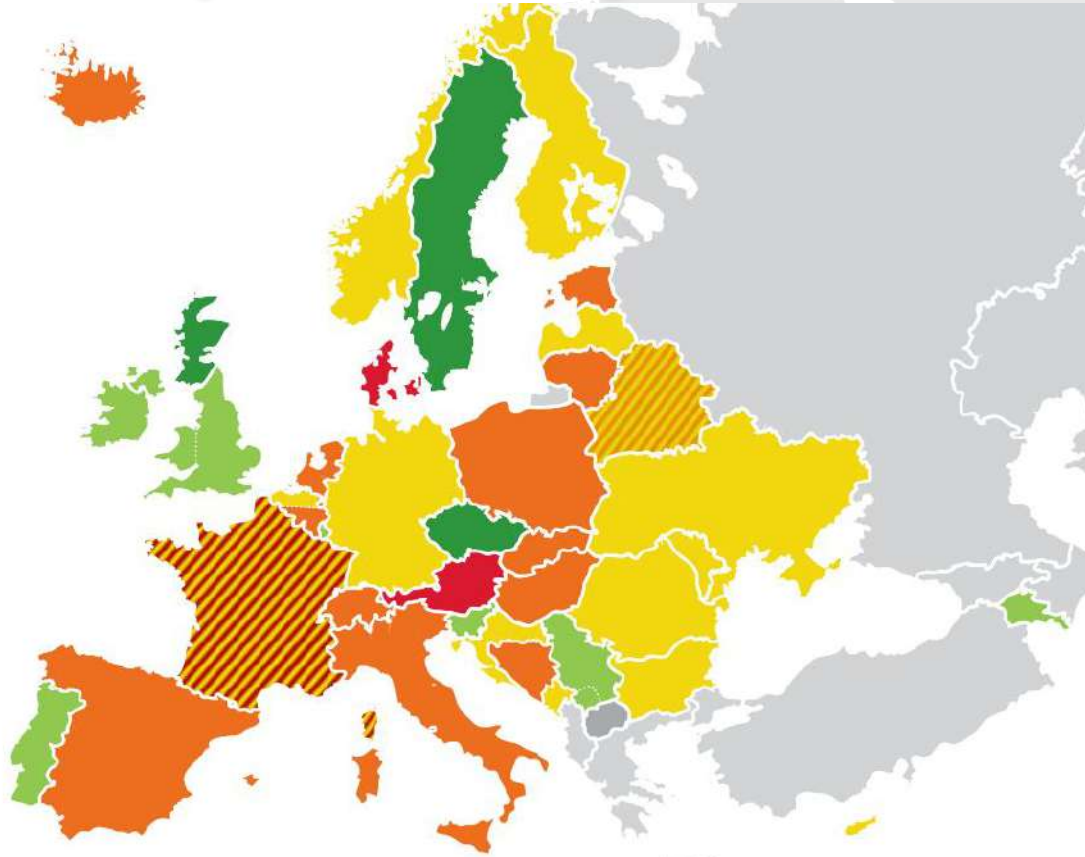
# Social Dimension and society – Covid, Ukraine, energy - poverty

- University applicants from working-class backgrounds were twice as likely to have insufficient access to the internet, devices for learning or a suitable place to study, compared to those from middle class homes (Montacute and Holt White, 2020)
- Over half of the survey sample reported feeling lonely on a daily or weekly basis. **The risk of dropping out was much higher for students who had lower levels of satisfaction** with their student experience (Wonkhe, 2020)
- While 13 % of all surveyed students planned to delay their graduation due to the COVID-19 pandemic, **lower-income students were 55 % more likely to delay graduation** than their more affluent classmates (Aucejo et al., 2020)
- **40 % of all students** screened positive for generalised **anxiety disorder** (Chirikov, 2020)

**To what extent do you believe SD is  
a priority in your country?**



# SD as a priority according to NUSes



**ESU** EUROPEAN STUDENTS' UNION

**Thank you for your attention!**

Horia Onița,  
Vice President of ESU  
[horia.onita@esu-online.org](mailto:horia.onita@esu-online.org)