

# EUA-CDE Annual Meeting

## Measures to support the swift finalization of the doctorate with a flexible system

Tim Klinge, M.Sc.

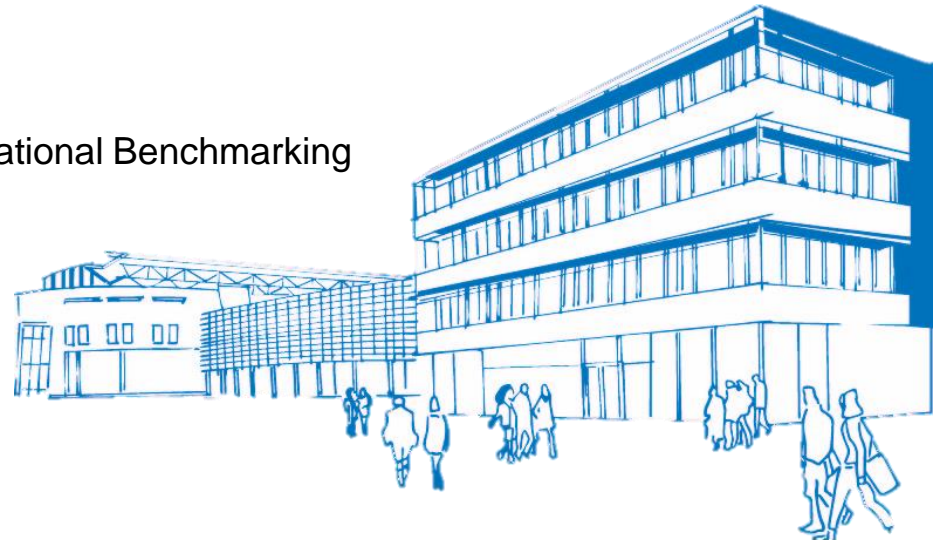
Project Manager Statistics, Evaluations and International Benchmarking

TUM Graduate School

Technical University of Munich

[Klinge@zv.tum.de](mailto:Klinge@zv.tum.de)

[www.gs.tum.de](http://www.gs.tum.de)



# Facts and Figures

(statistics 2021)

**8852**

current members



**1681**

Intakes in 2021

Graduations in 2021

**1115**



**29%**

International doctoral candidates

Established in

**2009**



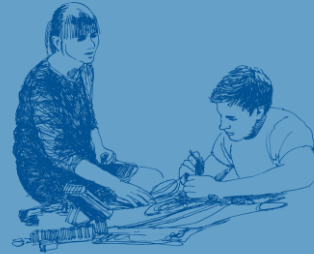
**104**

different nationalities



**38%**

Female doctoral candidates



**China,  
Austria, Italy,  
India, Iran**

Top 5 international countries of origin



# Structure

The TUM Graduate School was established in 2009 and is organized into

- **11 different Graduate Centers for degree-awarding institutions**
- **7 interdisciplinary, interdepartmental Graduate Centers**
- **Management Office** at TUM Campus Garching
- **Graduate Dean** as a member of the TUM Extended Board of Management

# Objectives

**Quality &  
Services**

**Structure &  
Efficiency**

**Qualification  
& Networking**

**Internationality  
& Diversity**

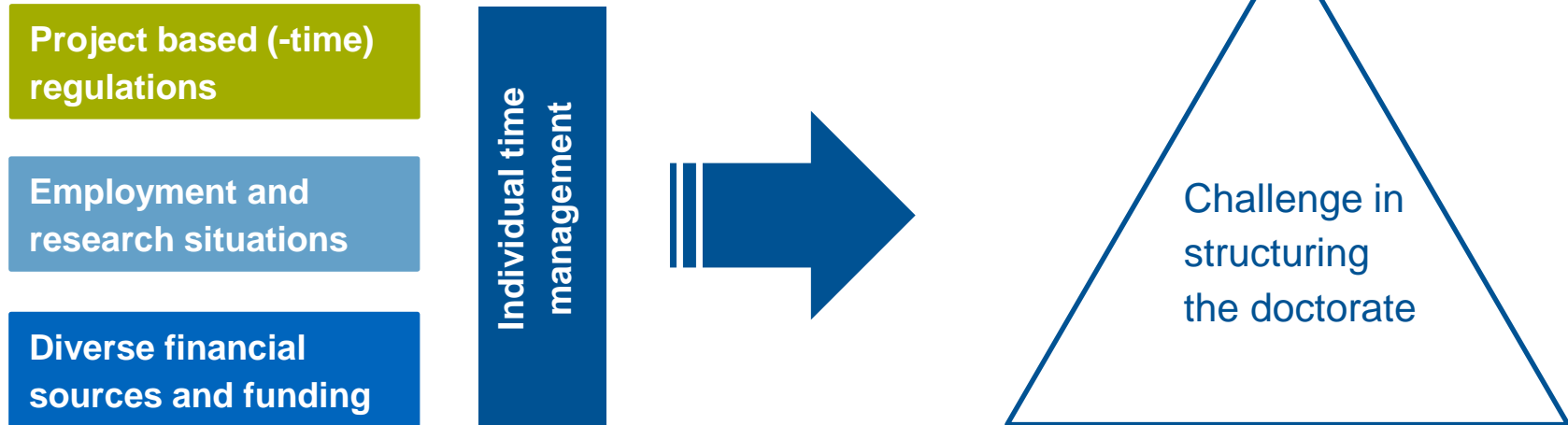
- Provide **tailored services** for each doctoral candidate
- Ensure the high quality of the doctorate at TUM through continuous **quality management**
- Give a common framework to help candidates **structure and efficiently design** their doctorate
- Provide **numerous qualification offerings**
- Support **networking** and increase the visibility and involvement of doctoral candidates
- Offer an **international** perspective with various exchange formats & funding initiatives
- Supporting **diverse talents** throughout the doctorate

# Doctorate @ TUM

The unique TUM doctoral model combines the benefits of a traditional individual doctorate and that of structured doctoral programs.

# Timing in doctoral education

## Contributing Factors and dimensions



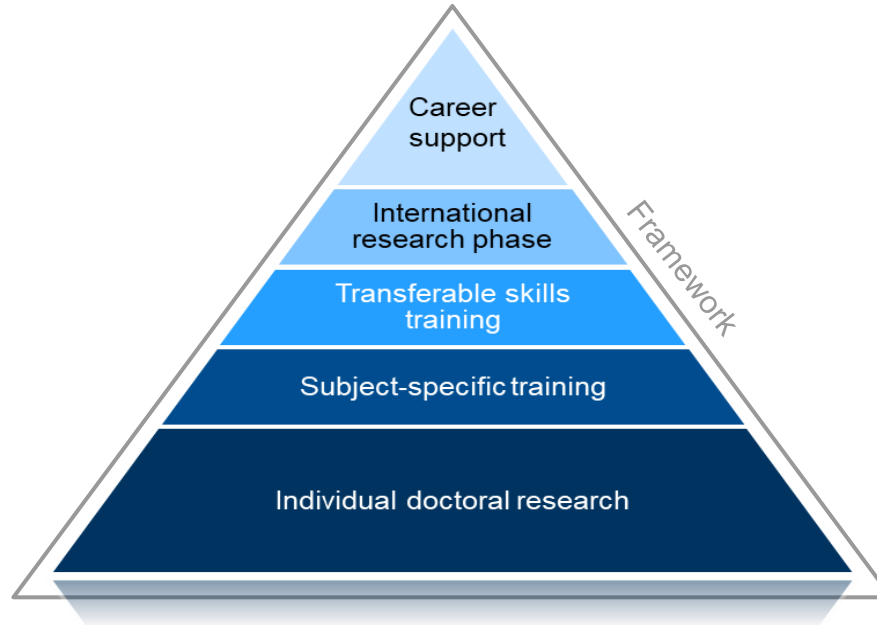
# Doctorate – the old way



Individual doctoral research

# The TUM doctoral model

The TUM doctoral model ensures **independent research** while providing a **structuring framework** for an efficient doctoral process. Each member can design the doctorate based on his\*her individual needs.





# Timing of the doctorate

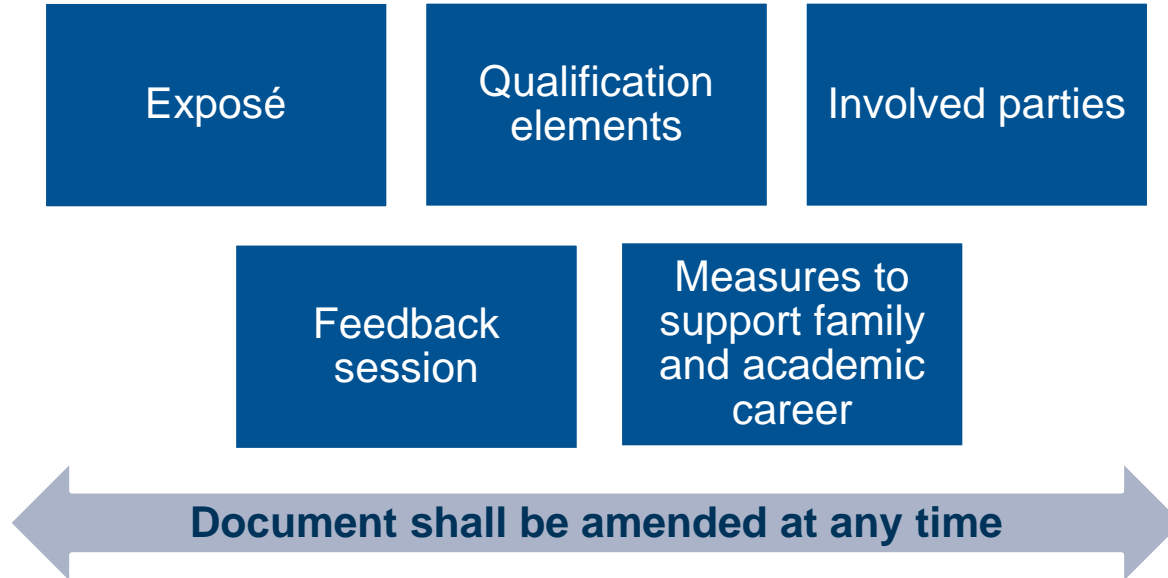
Structuring the doctorate with flexible measures

Supervision agreement

Qualification elements

Regulations

# Supervision agreement - Contents



# Supervision agreement - Qualification

*Supervision agreement defines the focus of qualification and traceable milestones*

Involvement in academic field

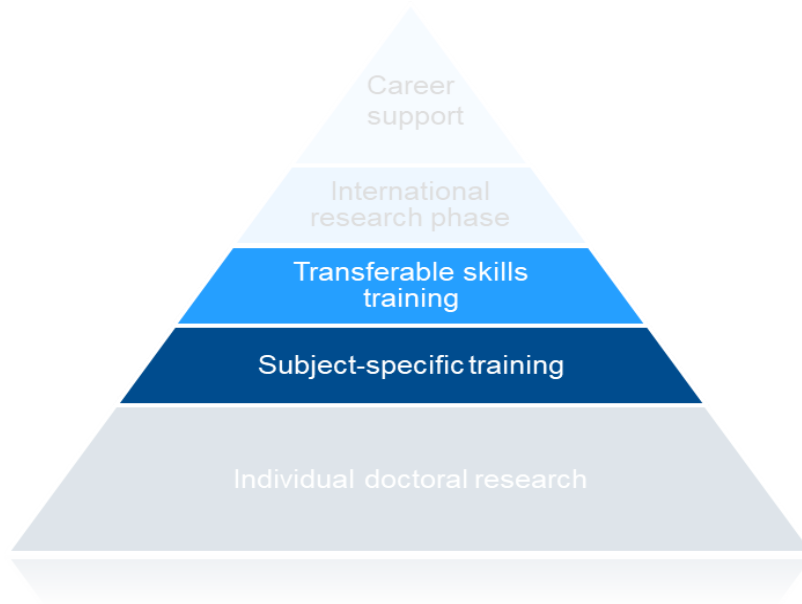
Subject-specific-qualification

Participation in voluntary interdisciplinary seminars

Optional internationalization

# Qualification elements

In order to supplement and deepen the independent academic work



- Mandatory subject-specific training with 60 hours total
- Swift completion fosters advancement in doctorate
- Voluntary Transferable skills offer valuable orientation for career advancement
- Progress bound to fulfillment of training

# Regulations

## Accounting for deviations from the norm with flexible measures

*Doctoral program needs to be tailored to individual research boundaries, as research projects, doctoral research and employment situation may not run parallel at times.*

- 2-year minimum duration of doctorate – exceptions apply
- Maximum duration of doctorate is not limited – statute sets framework
- Candidates are obliged to yearly data confirmation – terminations are recorded

# Doctoral Model – Ensuring quality in education

Orientation  
& Flexibility

Qualification

Structure &  
Efficiency

Quality &  
Services

- Provide **tailored services** for each doctoral candidate
- Ensure the high quality of the doctorate through continuous **quality management**
- Give a common framework to help candidates **structure and efficiently design** their doctorate
- Provide **numerous qualification offerings**
- **Managing expectations** with written agreement
- Give **regular reports** of the project's progress