





ORTA DOĞU TEKNİK ÜNİVERSİTESİ
MIDDLE EAST TECHNICAL UNIVERSITY

**BUILDING A VALUE- CREATING
ECOSYSTEM ON CAMPUS:
THE METU CASE**

PROF. DR. MUSTAFA VERŞAN KÖK
RECTOR
MIDDLE EAST TECHNICAL UNIVERSITY



ORTA DOĞU TEKNİK ÜNİVERSİTESİ
MIDDLE EAST TECHNICAL UNIVERSITY

-METU HAS 3 CAMPUSES.

- **ENGLISH** AS THE MEDIUM OF INSTRUCTION AT ALL
LEVELS AND DEGREES



**MAIN CAMPUS
ANKARA**
(founded in 1956)



**ERDEMLİ CAMPUS
MERSİN**
(founded in 1975)



**NORTHERN CYPRUS
KALKANLI**
(founded in 2000)





ORTA DOĞU TEKNİK ÜNİVERSİTESİ
MIDDLE EAST TECHNICAL UNIVERSITY

- THE CAMPUS AREA IS 4500 HECTARES (45 KM²)
- FORESTED AREA OF 3000 HECTARES (30 KM²)

THE REFORESTATION PROGRAM (HEADED BY THE FIRST METU STUDENTS AND STAFF) OF THE CAMPUS WAS AWARDED WITH THE INTERNATIONAL AGA KHAN ARCHITECTURE AWARD IN 1995.



The Aga Khan Award for Architecture is given every 3 years to global projects that set new standards of excellence in architecture, planning practices, historic preservation and landscape architecture.





ORTA DOĞU TEKNİK ÜNİVERSİTESİ
MIDDLE EAST TECHNICAL UNIVERSITY

LAKE EYMİR

IN 1956, A LAKE (LAKE EYMİR) WAS ALSO ALLOCATED TO THE MIDDLE EAST TECHNICAL UNIVERSITY (**METU**) FOR USE.





ORTA DOĞU TEKNİK ÜNİVERSİTESİ
MIDDLE EAST TECHNICAL UNIVERSITY

UNDERGRADUATE PROGRAMS

ENGINEERING (13)

- Aerospace Engineering
- Chemical Engineering
- Civil Engineering
- Computer Engineering
- Electrical and Electronics Engineering
- Environmental Engineering
- Food Engineering
- Geological Engineering
- Industrial Engineering
- Mechanical Engineering
- Metallurgical and Materials Engineering
- Mining Engineering
- Petroleum and Natural Gas Engineering

ART & SCIENCES (10)

Biology, Chemistry, History, Mathematics,
Molecular Biology and Genetics, Philosophy,
Psychology, Physics, Sociology, Statistics

ARCHITECTURE (3)

- Architecture
- City and Regional Planning
- Industrial Design

EDUCATION (7)

- Computer Education and Instructional Technology
- Educational Sciences
- Elementary Education
- Foreign Language Education
- Physical Education and Sports
- Secondary Science & Math. Education
- English Language Teaching (METU-SUNY)

ECONOMICS & ADMINISTRATIVE SCIENCES (6)

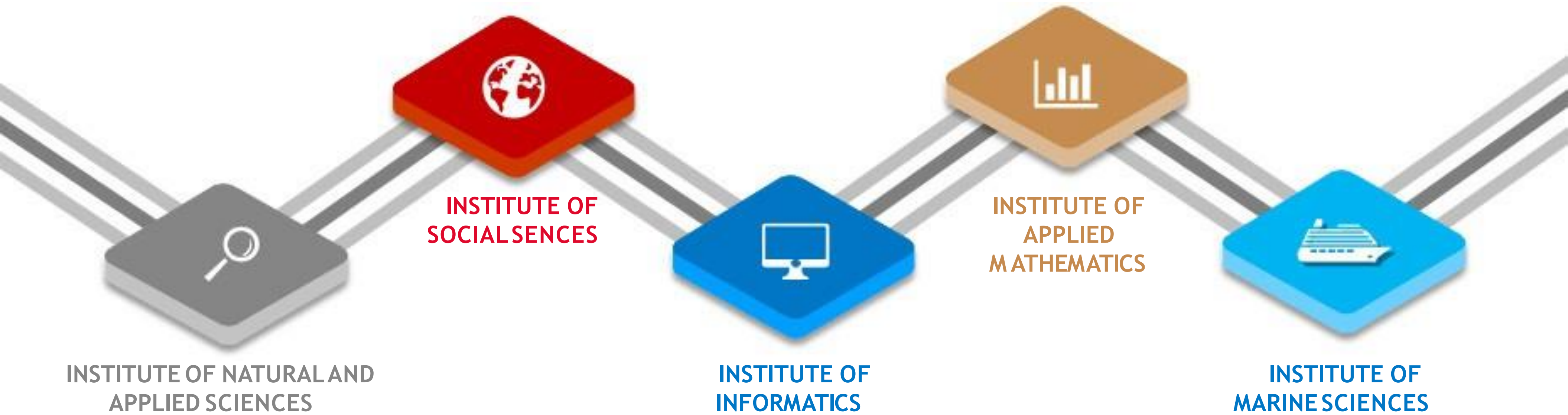
- Business Administration
- Economics
- International Relations
- Political Science and Public Administration
- Business Administration (METU-SUNY Binghamton)
- Global and International Affairs (METU-SUNY Binghamton)





ORTA DOĞU TEKNİK ÜNİVERSİTESİ
MIDDLE EAST TECHNICAL UNIVERSITY

GRADUATE EDUCATION





ORTA DOĞU TEKNİK ÜNİVERSİTESİ
MIDDLE EAST TECHNICAL UNIVERSITY



1 out of every 5 METU
graduates live abroad





ORTA DOĞU TEKNİK ÜNİVERSİTESİ
MIDDLE EAST TECHNICAL UNIVERSITY

REPUTABLE INTERNATIONALLY

**METU IS RANKED AMONG
THE “TOP 100
WORLD UNIVERSITIES
BY REPUTATION”**

THE WORLD
UNIVERSITY
RANKINGS



METU RATED AMONG THE **TOP WORLD UNIVERSITIES** IN SEVERAL FIELDS/RANKINGS (QS, THE, LEIDEN, WEBOMETRICS and OTHERS) OVER THE YEARS.

THE **“WORLD UNIVERSITY RANKINGS 2014-2015”** RANK **85TH** AMONG TOP 400 UNIVERSITIES.

IN QS 2019, **METU** RANKED AS AMONG TOP UNIVERSITIES IN THE WORLD.

THE WORLD
UNIVERSITY
RANKINGS

QS WORLD
UNIVERSITY
RANKINGS

METU RANKED AS THE **TOP UNIVERSITY IN TURKEY** IN ENGINEERING AND TECHNOLOGY, BASIC SCIENCES, AND SOCIAL SCIENCES.



ORTA DOĞU TEKNİK ÜNİVERSİTESİ
MIDDLE EAST TECHNICAL UNIVERSITY



FIRST “**CAMPUS UNIVERSITY**” IN TURKEY



3
campuses



5
faculties



107
graduate
programs



30,000+
students (share of
graduate students is
30 %)



5
institutes



69
postgraduate
programs



1,250
full-time faculty
members



41
undergraduate
programs



31
interdisciplinary
research centers





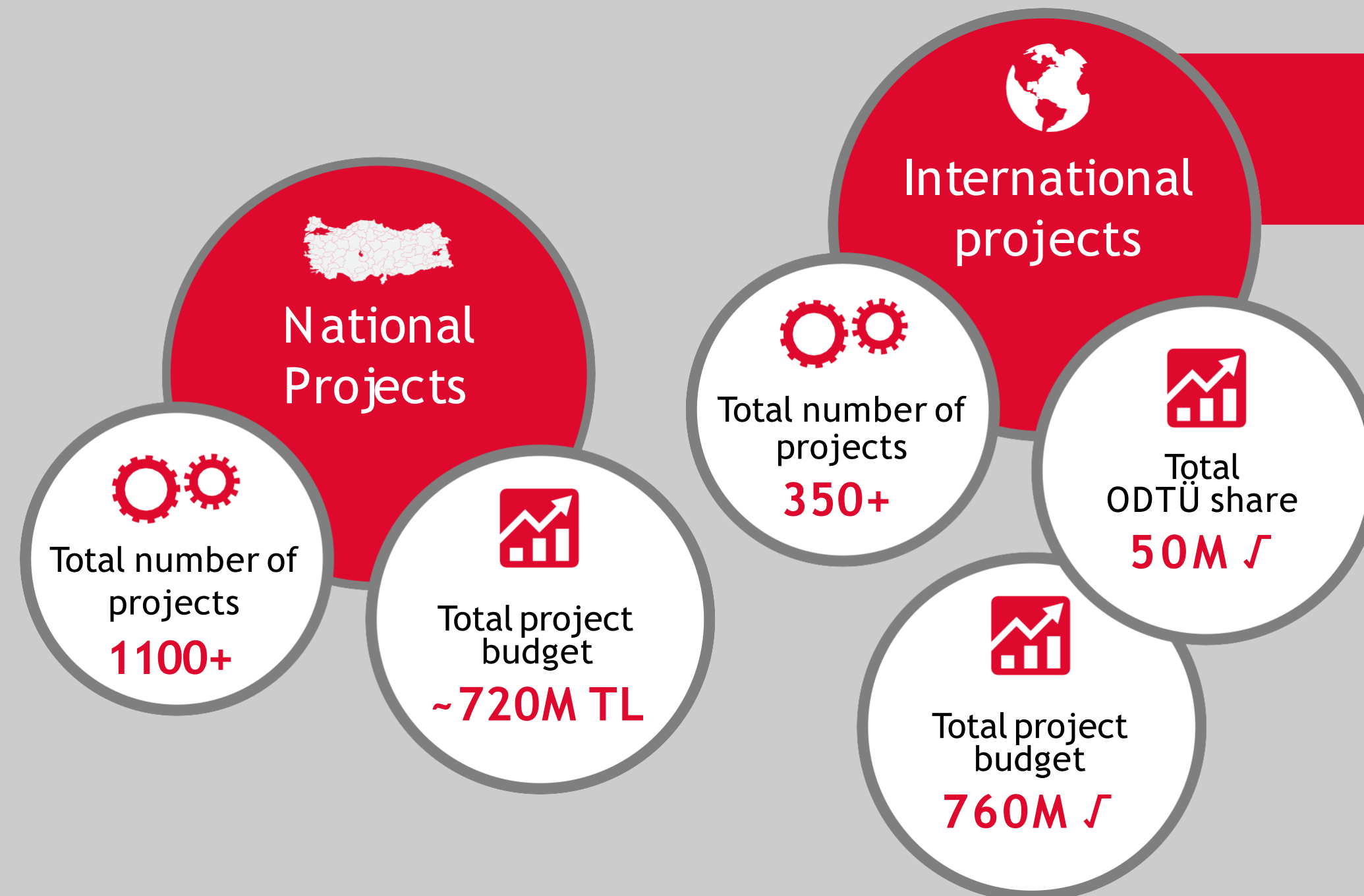
ORTA DOĞU TEKNİK ÜNİVERSİTESİ
MIDDLE EAST TECHNICAL UNIVERSITY



31

INTERDISCIPLINARY
RESEARCH CENTERS

METU AS A RESEARCH UNIVERSITY




20-25 %
of total income
comes from
competitive research
incomes





ORTA DOĞU TEKNİK ÜNİVERSİTESİ
MIDDLE EAST TECHNICAL UNIVERSITY

FIRST INITIATIVE IN UNIVERSITY-INDUSTRY COLLABORATION

ODTÜ TEKMER (Technology Development Center) was established in 1992 in collaboration with KOSGEB (Small and Medium Enterprise Development Organization)

Main objectives

- Transferring technological and scientific know-how in university to economy and production
- Supporting commercialization of R&D and innovation work results
- Encouraging and supporting technology-based entrepreneurship
- Increasing R&D and innovation capacity



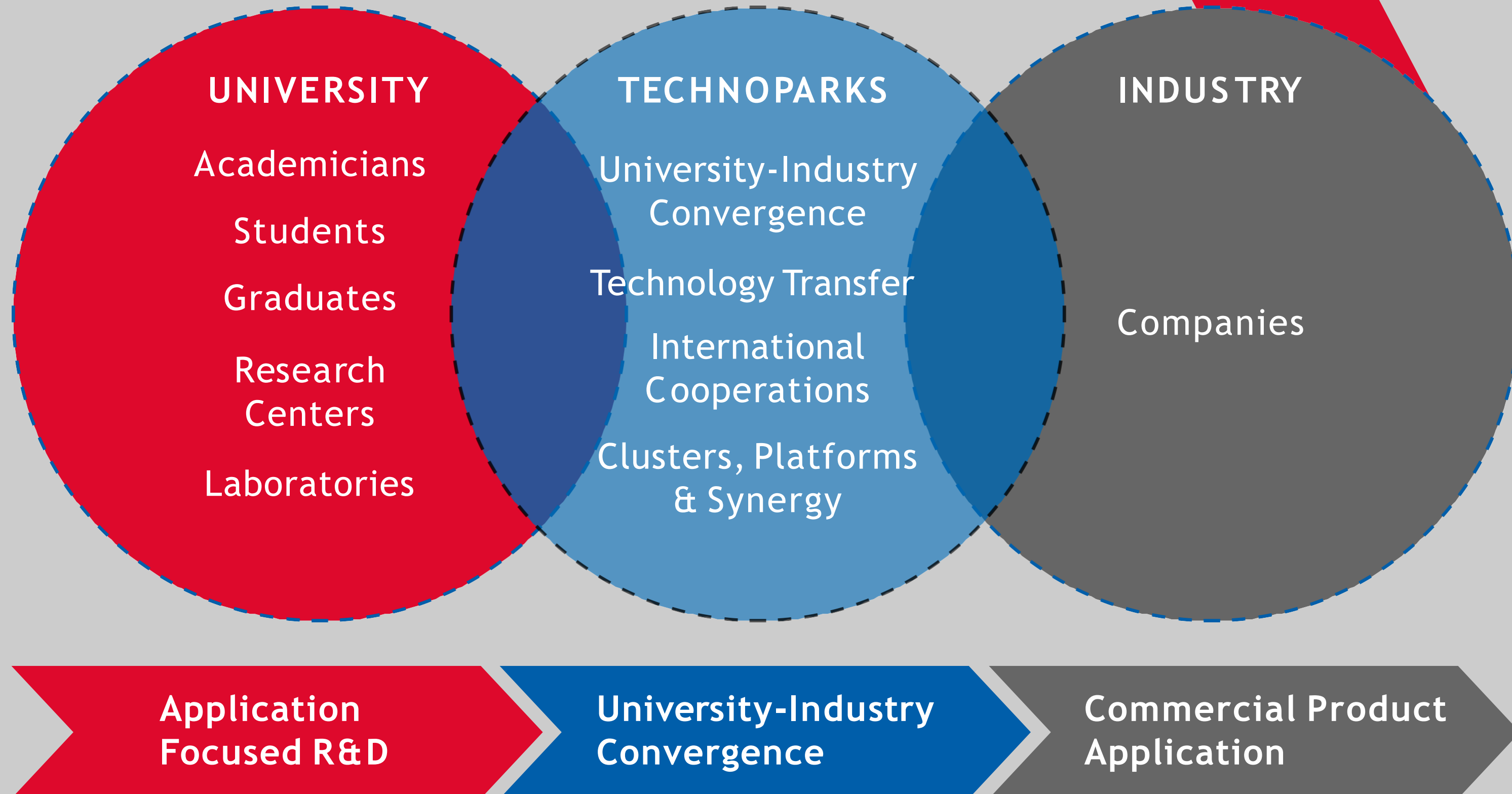


ORTA DOĞU TEKNİK ÜNİVERSİTESİ
MIDDLE EAST TECHNICAL UNIVERSITY





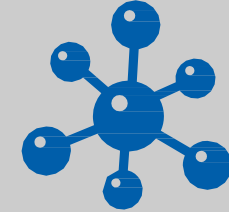
ORTA DOĞU TEKNİK ÜNİVERSİTESİ
MIDDLE EAST TECHNICAL UNIVERSITY



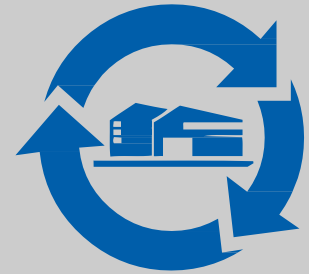


ORTA DOĞU TEKNİK ÜNİVERSİTESİ
MIDDLE EAST TECHNICAL UNIVERSITY

ODTÜ·TEKNOKENT



380+ Technology Companies
more than 60% are started up in ODTÜ TEKNOKENT



A total closed area of
170.000 m²
3 campuses



7.500+
total personnel



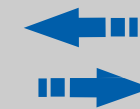
6.500+
R&D personnel



~1200
Projects
carried out:
(at a time)



>1.3 billion US \$
technology exports
(not including
manufacturing
numbers)



>13 billion TL
technology sales
(domestic)



ORTA DOĞU TEKNİK ÜNİVERSİTESİ
MIDDLE EAST TECHNICAL UNIVERSITY

ODTÜ·TEKNOKENT

- LOCATED IN THE CAPITAL CITY OF TURKEY, ANKARA
- LACK OF ENTREPRENEURSHIP MECHANISMS





ORTA DOĞU TEKNİK ÜNİVERSİTESİ
MIDDLE EAST TECHNICAL UNIVERSITY

VALUE CREATING INNOVATION ECOSYSTEM





ORTA DOĞU TEKNİK ÜNİVERSİTESİ
MIDDLE EAST TECHNICAL UNIVERSITY

INSPIRING

- CREATING AWARENESS ON ENTREPRENEURSHIP AS A **CAREER OPTION**
- SUPPORTING STUDENTS TO BE ENTREPRENEURS OR WORK FOR START-UPS RATHER THAN CORPORATIONS.





ORTA DOĞU TEKNİK ÜNİVERSİTESİ
MIDDLE EAST TECHNICAL UNIVERSITY



A COMMUNITY, LEARNING AND PRACTICING ENTREPRENEURSHIP
FROM ENTRY IN UNIVERSITY.



Totally student-led student incubation center



Showing that entrepreneurship is a career
path for university students



Educating more than **1.000** students on
innovation and entrepreneurship every year.

INSPIRING



ORTA DOĞU TEKNİK ÜNİVERSİTESİ
MIDDLE EAST TECHNICAL UNIVERSITY

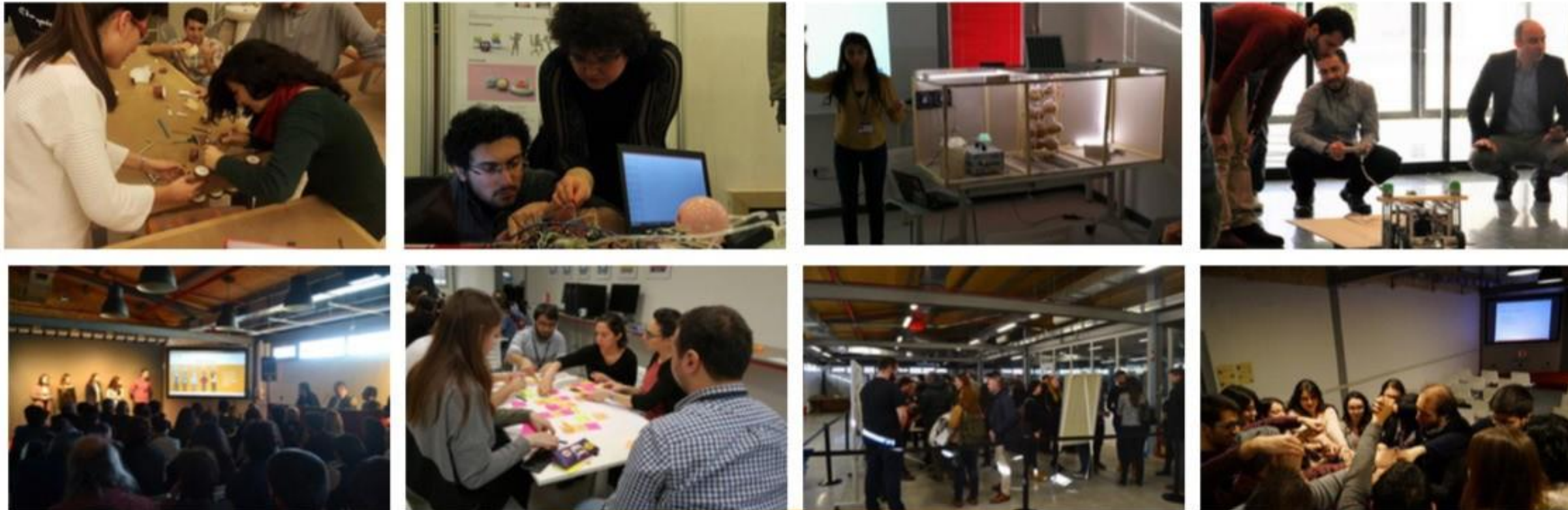


ODTÜ
METU



tasarım fabrikası.

AIMS TO CONVERT THEORETICAL KNOWLEDGE AND
PRACTICAL EXPERTISE OF STUDENTS INTO INNOVATIVE
PRODUCT IDEAS AND SOLUTIONS TO SOCIETAL
PROBLEMS.



INSPIRING



ORTA DOĞU TEKNİK ÜNİVERSİTESİ
MIDDLE EAST TECHNICAL UNIVERSITY



ODTÜ
METU



tasarım fabrikası.

INSPIRING



ODTÜ DF brings together interdisciplinary student teams to develop innovative product ideas and prototypes through extra-curricular program. An incubation center, run by students, for students.



METU DF provides rapid prototyping and product development infrastructure to relevant departments at the university.



In Design Factory, universities, technoparks, industry and community organizations cooperate to redefine real problems and to produce solutions using design thinking methods.



ORTA DOĞU TEKNİK ÜNİVERSİTESİ
MIDDLE EAST TECHNICAL UNIVERSITY

CREATING & SUPPORTING

- **LEADING THE WAY** TO ENTREPRENEURS AND STARTUPS FROM THE VERY EARLY STAGES.
- **PROVIDING SUPPORT** FOR DIFFERENT NEEDS IN THE PROCESS FROM IDEA TO PROTOTYPE AND FROM PROTOTYPE TO THE MARKET.





ORTA DOĞU TEKNİK ÜNİVERSİTESİ
MIDDLE EAST TECHNICAL UNIVERSITY

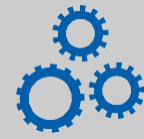
PRE-INCUBATION & INCUBATION PROGRAMS

INCUBATION CENTERS



70+

New Startups
Establish



150+

Startups/
Spin Offs
Hosted



1000+

Mentorships



3000+

Access



2000+

Trainings

CREATING & SUPPORTING



>200
Startups



750+

Employment



\$ 50 M

Investment



12

Years of Success



ANIMATION TECHNOLOGIES &
DIGITAL GAMING
PRE-INCUBATION CENTER



1.500+

Developers



400+

Games



25

Firms



30 M +

Gamers



\$ 1,5 M

Exports



ORTA DOĞU TEKNİK ÜNİVERSİTESİ
MIDDLE EAST TECHNICAL UNIVERSITY

COMMERCIALIZATION & SCALING

- INTENSIVE R & D IS REALISED DUE THE CULTURE OF THE CITY AND UNIVERSITY ITSELF, HOWEVER COMMERCIALIZATION IS **VERY LIMITED**.
- **PROVIDING INTERFACES** FOR THE COMMERCIALIZATION OF RESEARCH PROJECTS.





ORTA DOĞU TEKNİK ÜNİVERSİTESİ
MIDDLE EAST TECHNICAL UNIVERSITY



TECHNOLOGY TRANSFER OFFICE



500+

Company
Interactions to create
university-industry
collaborations



700+

different
academics
matched with
the industry



1.500+

joint R&D
projects



2.500+

contracts (both R&D and
consultancy agreements)



150+

inventions



20+

commercialized
patents



340+

patent
applications



200+

granted
patents



8+ M TL

commercialization income

COMMERCIALIZATION
& SCALING



ORTA DOĞU TEKNİK ÜNİVERSİTESİ
MIDDLE EAST TECHNICAL UNIVERSITY



GROWTH CIRCUIT VENTURES

Aim

To build Turkey's global and fastest growing companies

Investment Focus

Investment in early startups (pre-seed and seed)

Geography

Ankara, İstanbul and San Francisco

Investment Size

Between \$ 50,000 and \$250,000 per venture

Investment Portfolio

A total of \$ 360,000 investment ranging between \$ 20.000 to \$25.000

realized to 19 startups

COMMERCIALIZATION
& SCALING



- DESIGNING **SPECIAL MECHANISMS** FOR GLOBALIZATION, SO AS TO SUPPORT COMPANIES THAT USUALLY TEND TO GROW LOCALLY.
- CREATING STARTUPS AND ACADEMIC SPIN-OFFS TO BE **BORN GLOBAL**.





ORTA DOĞU TEKNİK ÜNİVERSİTESİ
MIDDLE EAST TECHNICAL UNIVERSITY



GROWTH CIRCUIT ACCELERATOR

- Established in **2014**
- Contribution to the network development of Turkish entrepreneurs
- Promotion of Turkish Startup environment in SF ecosystem with constantly organized activities at Growth Circuit



145

Startups
Accelerated



7

Acceleration
Programs in
2018 -2018

**Acceleration Programs
For Each Stage
of Startups in
cooperation with**

Early Stage



Pre/Post Revenue



GOING GLOBAL



ORTA DOĞU TEKNİK ÜNİVERSİTESİ
MIDDLE EAST TECHNICAL UNIVERSITY



IP FOCUSED ACCELERATOR - LABSOUT

- RESEARCH BASED (INTELLECTUAL PROPERTY FOCUSED) START-UP ACCELERATOR.
- **OBJECTIVE:** HELP IDENTIFY, DEVELOP, AND SPEED UP THE COMMERCIALIZATION OF UNIVERSITY - BASED INTELLECTUAL PROPERTY THROUGH COMMERCIALIZATION BY LICENSING THE TECHNOLOGY TO THE NEW START-UPS ESTABLISHED BY THE INVENTORS.

GOING GLOBAL



ORTA DOĞU TEKNİK ÜNİVERSİTESİ
MIDDLE EAST TECHNICAL UNIVERSITY

MAKING PART OF COMMUNITY

- REGARDLESS OF THE PROGRAM OFFERED, IT IS IMPORTANT TO SET UP THE COMMUNITY CORRECTLY, TO LAY THE GROUNDWORK FOR ENTREPRENEURS AND STARTUPS TO COLLABORATE BY PROVIDING **SUPERSTRUCTURE AND INFRASTRUCTURE FACILITIES**.





ORTA DOĞU TEKNİK ÜNİVERSİTESİ
MIDDLE EAST TECHNICAL UNIVERSITY



CoZone

CO-WORKING

- Established in **December 2018**
- Turkey's first **technopark supported** co-working zone
- Total closed area of 2.300 m², serving more than 300+ members
- Offers various membership models and services in the form of private and shared offices, co-working, virtual office, meeting rooms and event area.

MAKING PART OF
COMMUNITY





ORTA DOĞU TEKNİK ÜNİVERSİTESİ
MIDDLE EAST TECHNICAL UNIVERSITY

VALUE CREATING INNOVATION ECOSYSTEM





ORTA DOĞU TEKNİK ÜNİVERSİTESİ
MIDDLE EAST TECHNICAL UNIVERSITY

OUR BIGGEST CHALLENGE: Being the first mover

- **METU** HAS TAKEN A PIONEERING ROLE IN THE CREATION OF AN INNOVATION ECOSYSTEM AND SUPPORTING ENTREPRENEURS IN TURKEY.
- BEING A PIONEER, MANY CHALLENGES WERE ENCOUNTERED SINCE THE SYSTEM IS NOT YET COMPLETELY ESTABLISHED.
- OVERCOMING THESE CHALLENGES CAN ONLY BE POSSIBLE BY TAKING A PROACTIVE ROLE IN RELATIONS BOTH WITH THE PUBLIC AND PRIVATE SECTOR AND TAKING AN ACTIVE ROLE WITHIN THE CREATION OF AN ECOSYSTEM.



ODTU & ODTU TEKNOKENT Entrepreneurship Programs

ODTU STUDENTS (3.-4. GRADE)

INDIVIDUALS / EARLY STAGE
STARTUPS (Idea to product)

ACADEMICIAN

INTERNATIONALIZATION

INVESTMENT

ANIMATION AND GAMING
TECHNOLOGIES

COMMUNITY & PHYSICAL SPACE

AWARENESS

IDEA

MARKET
VALIDATION

PRODUCT

COMMER-
CIALIZATION



Labsout



Accelerator



Ventures



Pre-incubation



Incubation



