



Designing a framework for internal
QA of research.
Els Palmans & Koen Rymenants

Excellent PHE is so much in synergy with society that it helps to shape the future of the professions through applied research and social impact.

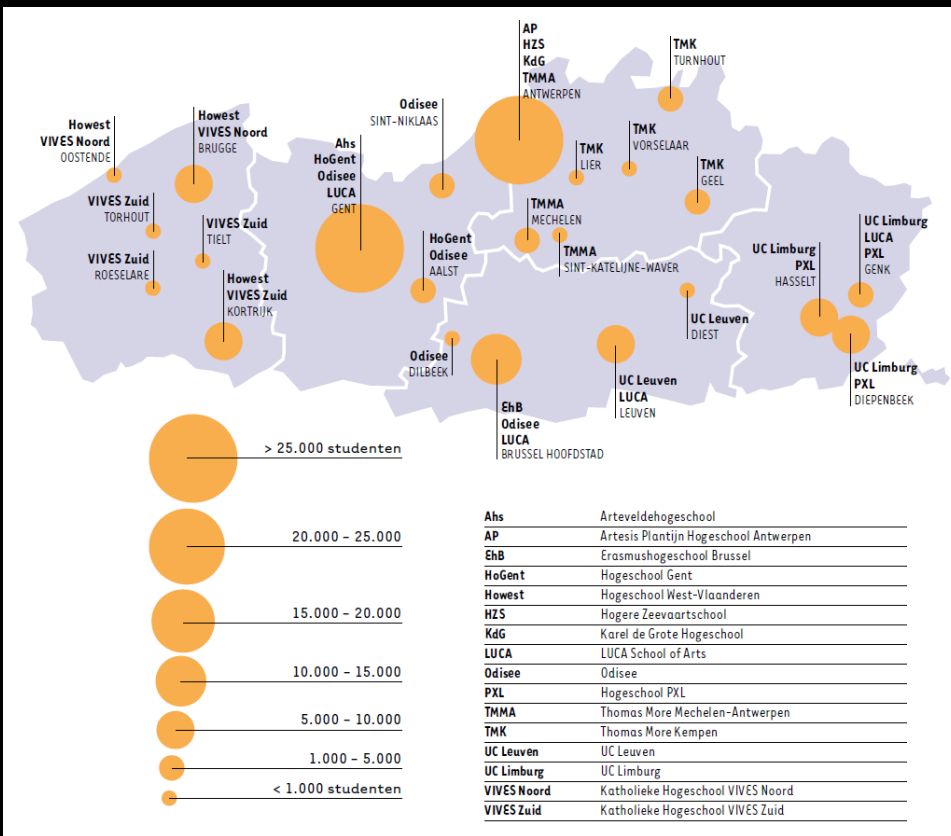
Lucien Bollaert (2014: 36)

**HO
GENT**



The context.

**HO
GENT**



maix, *Map of the Flemish Region in Belgium, and within Europe*. Released under Creative Commons Attribution-Share Alike 3.0 Unported
https://commons.wikimedia.org/wiki/File:Flemish_Region_in_Belgium_and_Europe.svg
 https://www.wikiwand.com/wiki/File:Flemish_Region_in_Belgium_and_Europe.svg
<http://vlhora.be/Pageflips/20-03-2018/files/assets/common/downloads/Onderzoek%20met%20impact%20.pdf>

HO GENT

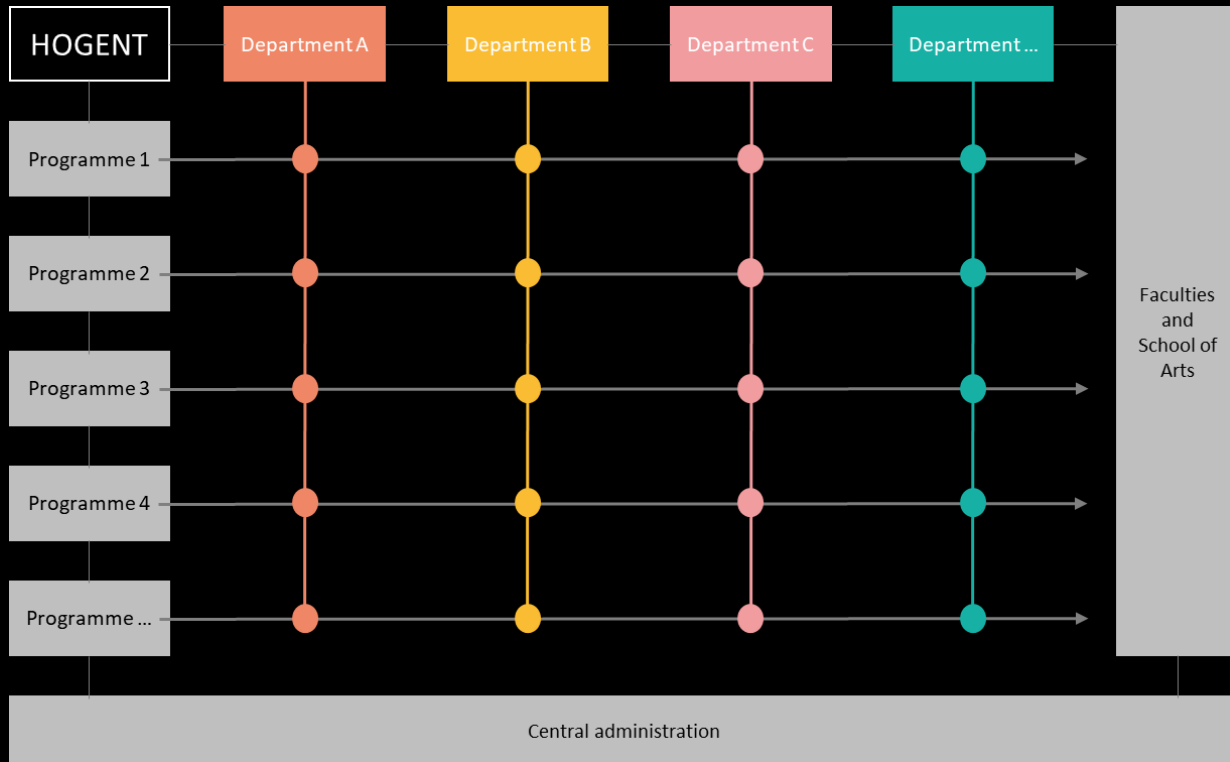
QA in Flemish PHE.

- **external QA**
 - first institutional review in 2016
 - no systematic EQA for applied research
 - provision for EQA of research in HE legislation

- **internal QA for applied research**
 - project-based
 - need for QA on level of research unit

Departments as research units.

- **responsibilities related to research**
 - developing and sharing expertise
 - carrying out applied research
 - creating societal impact
- **differences between departments**
 - size
 - range of expertise
 - track record in research
- **matrix of departments and education programmes**



Vision of applied research.

- connected to teaching
- interdisciplinary collaboration
- societal challenges
- maximal impact



A large, stylized orange letter 'H' graphic that serves as a background for the text.

The framework.

**HO
GENT**

Requirements.

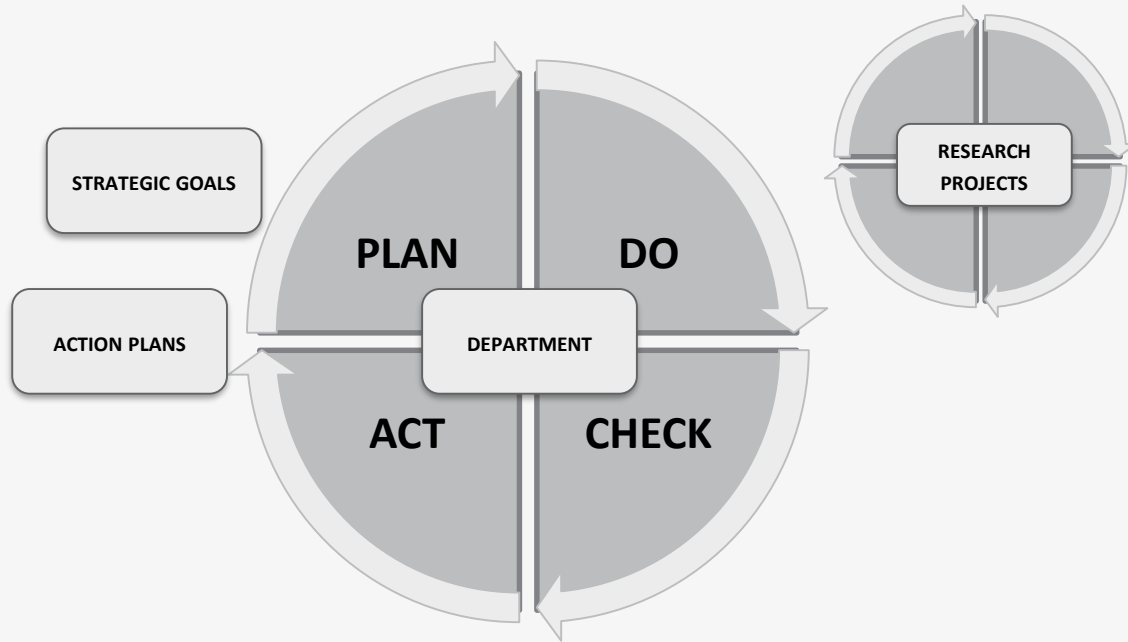
- **applicable to all departments**
 - stimulate reflection on research
 - suggest avenues for quality enhancement
 - reflection and evaluation, not rating or ranking

- **aligned with strategic choices**

Blueprint.

- **designed through co-creation**
 - internal stakeholders
 - partner institutions
 - working party: Office of Research Affairs and QA Office

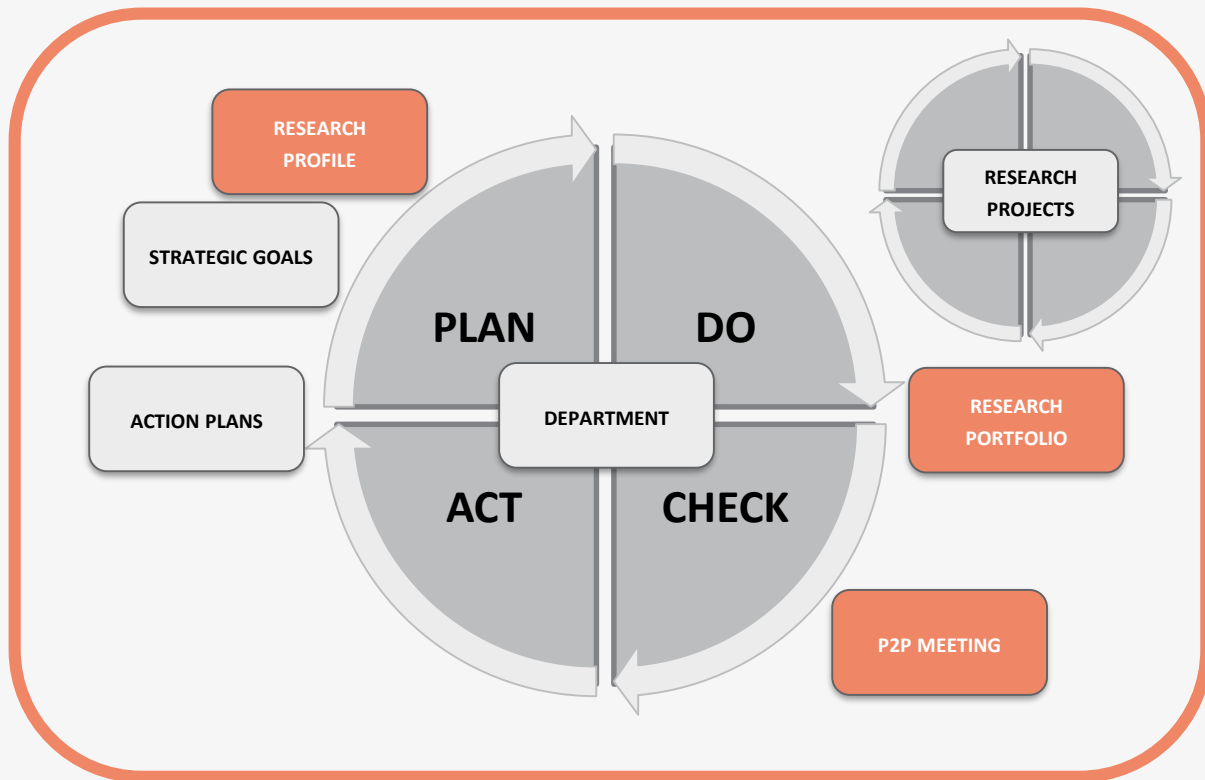
- **validated by Executive Board**



**HO
GENT**

Components.

- **four quality standards for applied research**
- **department's research profile**
- **department's research portfolio**
- **peer-to-peer meeting**



QUALITY STANDARDS

HO GENT

Pilot.

- **three departments**
 - Fashion, Textile and Wood Technology
 - Pedagogy and Didactics
 - Commercial Economics and Entrepreneurship

- **first experiences**
 - reflection in department and institution-wide
 - flexibility

Conclusions.

Challenges.

- data quality
- quality culture

Success factors.

- **co-creation**
- **light requirements for portfolio and P2P**
- **P2P = link with QA of education**
- **flexibility and transferability**