

# Governance and Institutional Structures for Postgraduate Research at The University of Edinburgh

## Jeremy Bradshaw

Assistant Principal (Researcher Development)  
Chair of Molecular Biophysics  
Director International

THE UNIVERSITY *of* EDINBURGH





# The University of Edinburgh



THE UNIVERSITY *of* EDINBURGH







- An ancient university, founded in 1583;
- Home of the Enlightenment;
- Associated with 16 Nobel Prizes;
- At the centre of Scotland's capital city;
- 22 Schools in 3 Colleges;
- One of the world's top 25 Universities.

- Large and diverse: over 35,000 students; one-third are postgraduate; staff and students comprise 9% of the population of Edinburgh; one million visitors per year.
- Disperse: 257 separate buildings; over several campuses.
- International: over 40% of students come from over 120 countries.
- Comprehensive: 103 of the 164 subjects defined by HESA.
- Research-led: in the top 4 UK and No.1 in Scotland by 4\* research.
- Committed to quality: over 140 degree programmes externally accredited.
- The University generates £2 billion annually for the Scotland. (BiGGAR Economics, 2015).



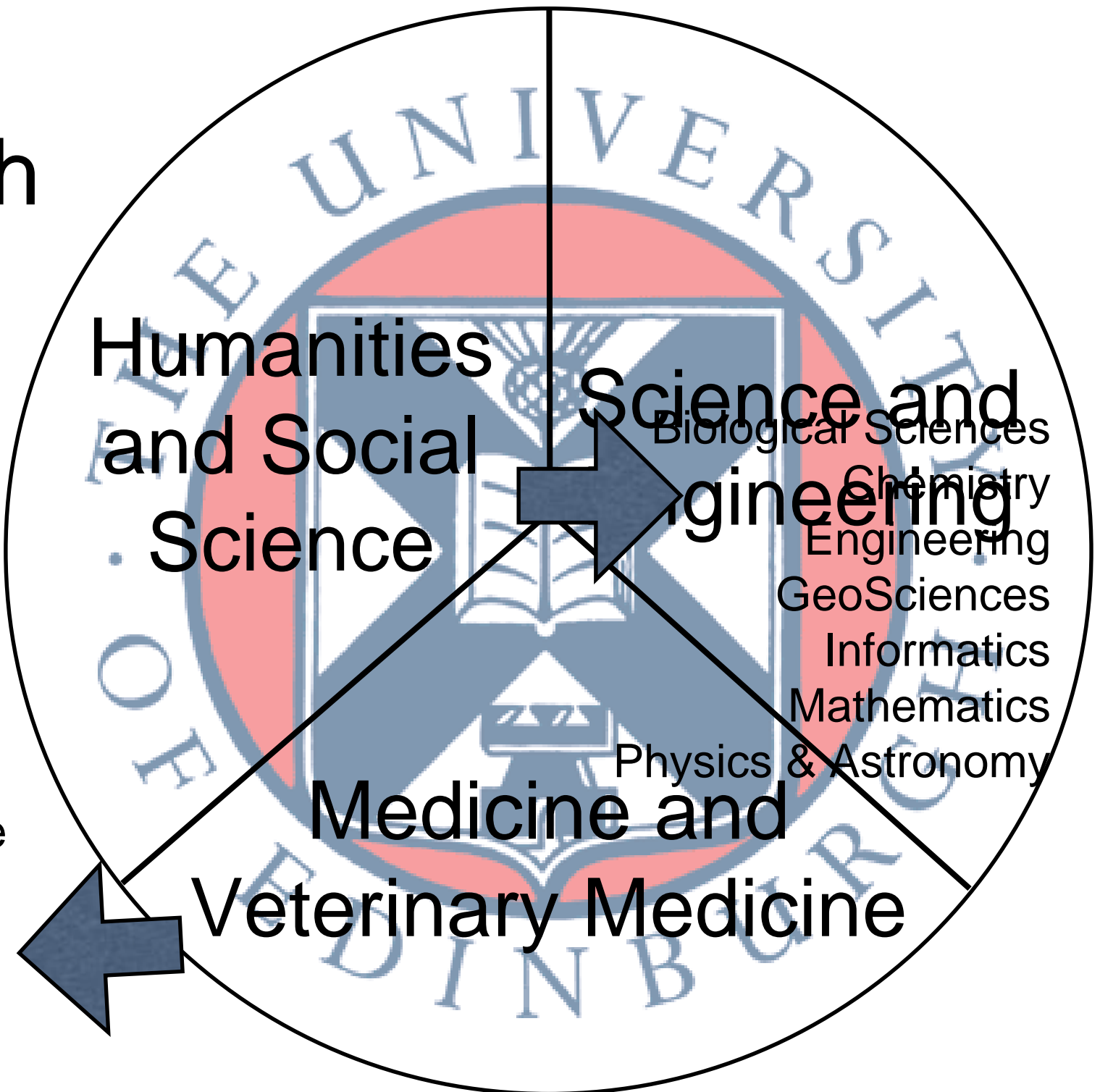


Students	UG	PGT	PGR	All
Scotland	8,706	1,608	1,410	11,724
Other UK	6,877	1,221	891	8,989
EU	2,618	1,092	870	4,580
Overseas	5,097	3,734	1,458	10,289
Total	23,298	7,655	4,629	35,582



# Colleges of the University of Edinburgh

Arts, Culture & the Environment  
Business  
Economics  
Divinity  
Education  
Health in Social Science  
History, Classics & Archaeology  
Law  
Literatures, Languages & Cultures  
Biomedical Sciences  
Philosophy, Psychology & Language  
Clinical Sciences  
Studies  
Molecular, Genetic & Population  
Social & Political Studies  
Health  
Sciences  
Royal (Dick) School of Veterinary  
Studies





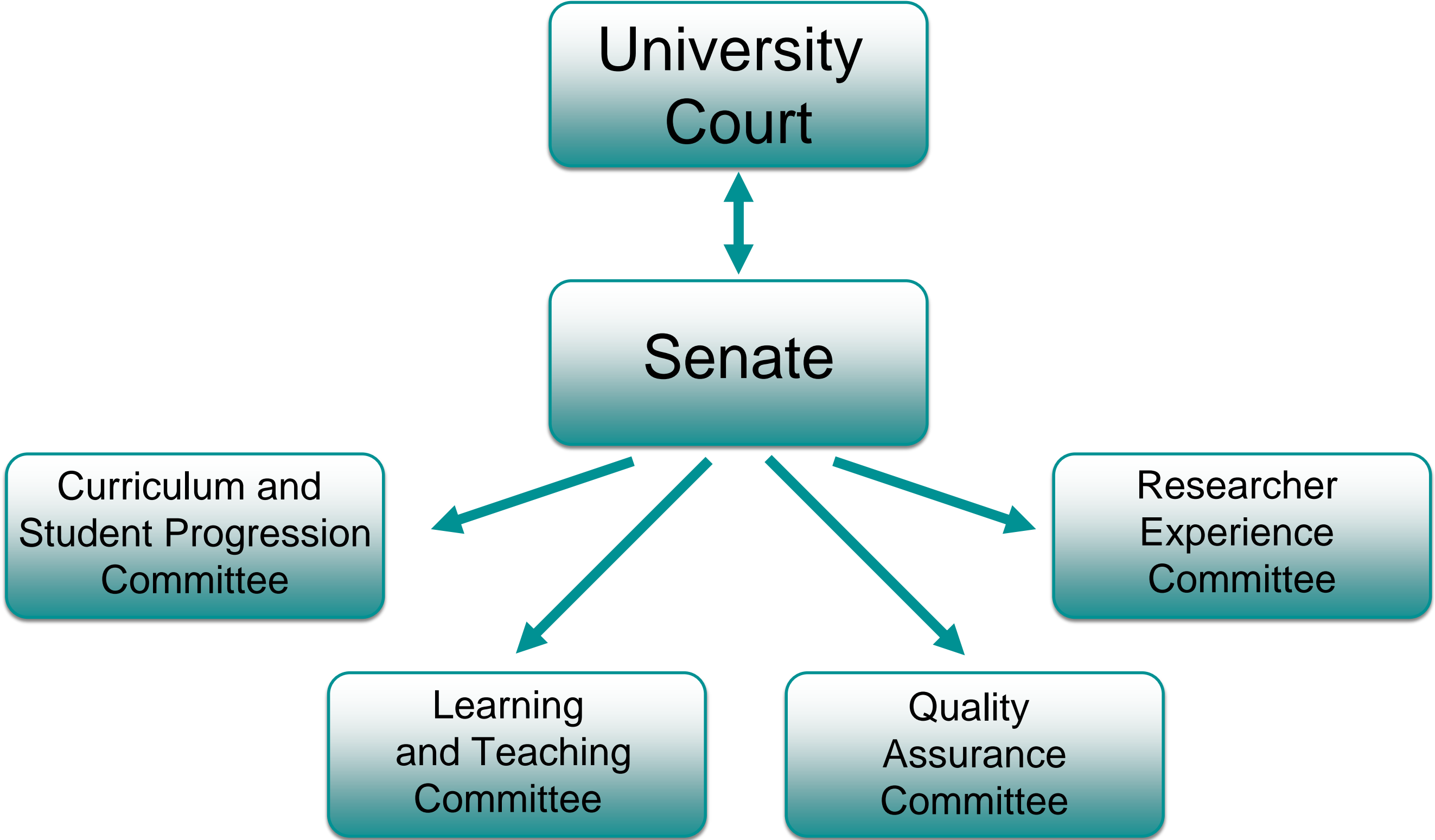
# Governance Structures



THE UNIVERSITY *of* EDINBURGH











# Senatus Research Experience Committee

## Terms of Reference

*The Research Experience Committee is responsible, on behalf of Senatus, for postgraduate research degree training, higher degrees and provision for the training of other, early career researchers.*

*The Committee provides a forum to facilitate and encourage the development of appropriate strategy and also discusses and promotes relevant developments, whether internally driven or externally indicated.*





# The PGR Remit of REC includes:

- Postgraduate research programmes;
- Enhancing researcher experience;
- Approving University postgraduate research policy;
- Responding to surveys (like PRES).



- Staff engage with REC through their College committees and College office;
- Committee members include senior College staff and EUSA representation;
- Students can engage with REC by contacting EUSA.







# INSTITUTE FOR ACADEMIC DEVELOPMENT

Institute for Academic  
Development home

Undergraduates

Postgraduates

Research roles

Learning & teaching roles

Working with us

About us

[Home](#) > [Institute for Academic Development](#)

[Contact us](#)



## Study skills support for students

[Undergraduates](#)

[Postgraduates](#)

[LearnBetter: online study skills](#)



## Researchers: career & skills development support

[PhD students](#)



## Learning and teaching support

[Learning, teaching & assessment](#)

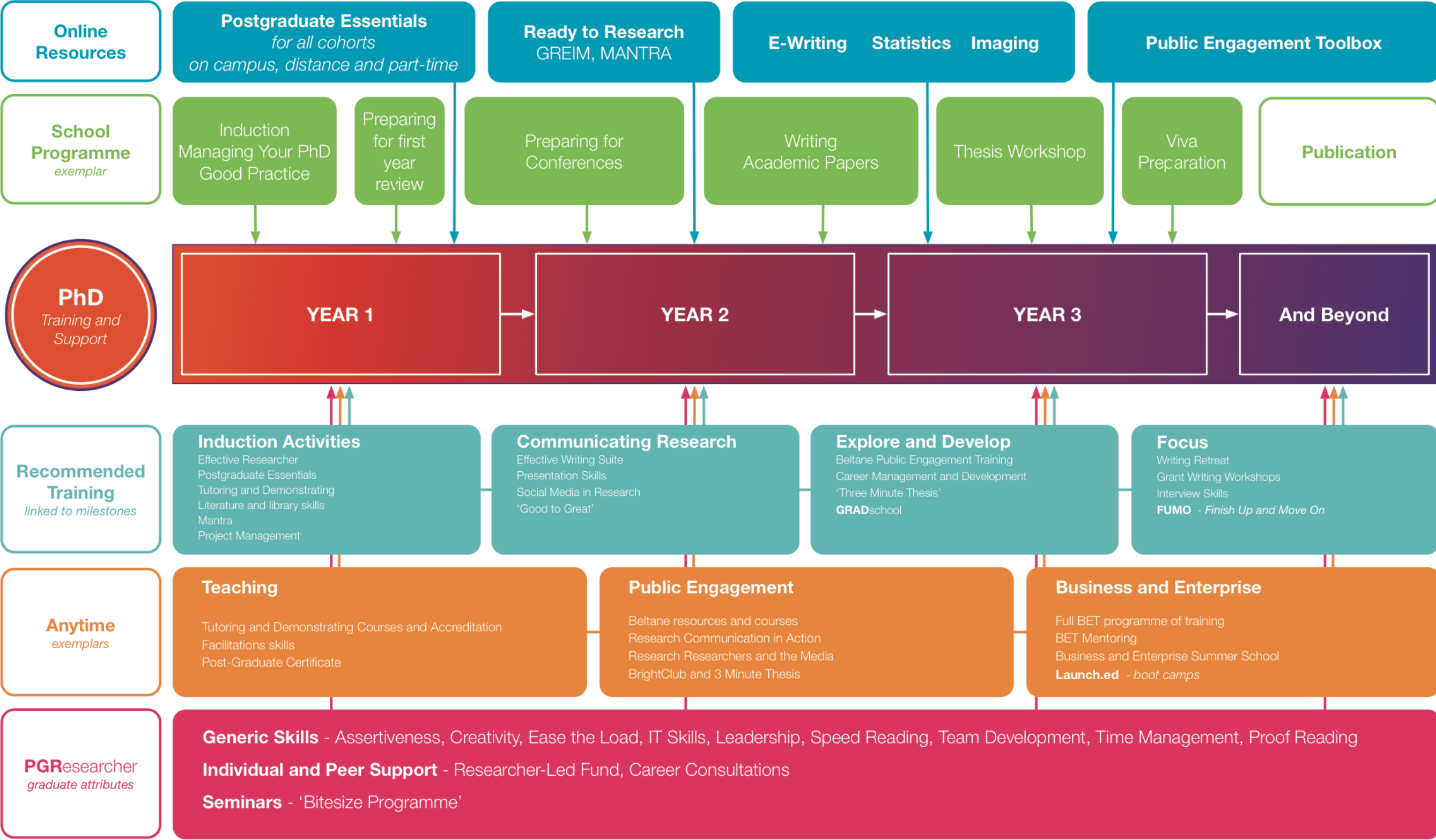
[Tutoring & demonstrating](#)

[Academic & pastoral support](#)

THE UNIVERSITY *of* EDINBURGH









# External Representation



League of European  
Research Universities



Coimbra Group

Universitas 21



Russell Group **RUSSELL  
GROUP**





# Current Developments in PhD Training



THE UNIVERSITY *of* EDINBURGH







## REC: Current Topics:

What is an Edinburgh PhD?

- flexible PhDs,
- American-style PhDs,
- joint/double PhDs,
- 3 or 4 years?



# Flexible PhDs

- Experience with distance-learning Masters;
- REC taskgroup;
- Other universities.





## American-style PhDs

- More explicit link to teaching;
- Skills development;
- Quality assurance;
- Reward;
- Other flavours?



# Joint/Double PhDs

- KPI in Strategic Plan;
- Joint v. Double;
- ExEDE.



THE UNIVERSITY *of* EDINBURGH







[j.bradshaw@ed.ac.uk](mailto:j.bradshaw@ed.ac.uk) - [www.ed.ac.uk](http://www.ed.ac.uk)