

GHENT UNIVERSITY

OPTIMIZING THE USE OF SPACE

EUA Funding Forum 18/10/2018

GHENT UNIVERSITY AT A GLANCE



43.484 students

54 bachelor programmes

142 master and subsequent master programmes



9.319 staff



1.595

Professorial staff



1.366

Assistant Academic
Staff



3.604

Externally funded researchers

6.565 academic staff



2.754

administrative &
technical staff



670 million euro annual turnover



+/- **200** buildings

2,5 km² area

940.000 m² bruto floor area



Top 100 ranked institution



10

11

5

6

4

8

7

3

2

9

1

11 FACULTIES



 FACULTY OF ARTS
AND PHILOSOPHY



 FACULTY OF
LAW AND CRIMINOLOGY



 FACULTY
OF SCIENCES



 FACULTY OF MEDICINE
AND HEALTH SCIENCES

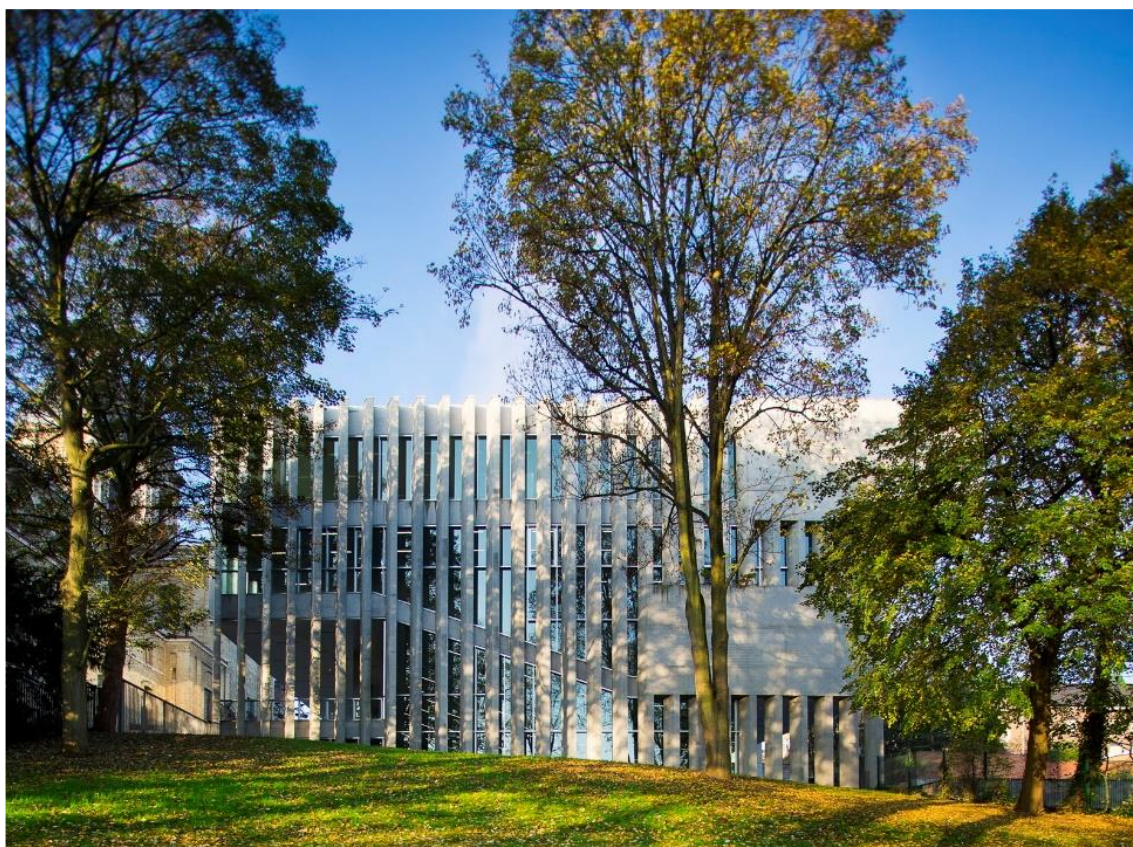


 FACULTY OF ENGINEERING
AND ARCHITECTURE



 FACULTY OF
VETERINARY MEDICINE
accredited by EAEVE


GHENT
UNIVERSITY



 FACULTY OF ECONOMICS AND
BUSINESS ADMINISTRATION



 FACULTY OF PSYCHOLOGY
AND EDUCATIONAL SCIENCES



 FACULTY OF
BIOSCIENCE ENGINEERING



 FACULTY OF
PHARMACEUTICAL SCIENCES



 FACULTY OF POLITICAL
AND SOCIAL SCIENCES


GHENT
UNIVERSITY

REAL ESTATE PLANNING

Creating a compact university, with an emphasis on optimal use of space

Realising the growth of the university within the existing m²

Raising awareness about the exploitation cost



REAL ESTATE PLANNING

exclusive and contained accomodations	>	shared and open infrastructure
own resources	>	(financial) collaborations
extensive use of spaces per student and staff member	>	intensive use of spaces
focus on individual needs	>	focus on collective needs
big ecological footprint	>	small ecological footprint

OPTIMIZING THE USE OF SPACE (1)

PLANNING / SCHEDULING EDUCATIONAL ACTIVITIES

- Aim:
 - Creating the best educational conditions, both for the student and for the teacher
 - Optimal use of all educational spaces
- University wide participatory project (all stakeholders involved: students, teaching staff, central and decentral planners)
- Re-examination of all planning processes / Evaluation of the IT platform
- Indicators: increased satisfaction among students and teaching staff

OPTIMIZING THE USE OF SPACE (2)

SHARING WORKSPACES

- Aim:
 - Increased level of collaboration by rethinking the office space
 - More emphasis on the activity instead of on the individual (administrative work, concentration / study, formal and informal meeting, places for encounter, coffee corners)
- Assignment of m² office space per team based on a new spatial standard (10+2m² / FTE) > dialogue with the team about the setup
- By using a full cost approach we will set a standard cost per m² office.
- Indicators: increased use of occupation of office spaces, rationalised use of office space

OPTIMIZING THE USE OF SPACE (3)

CORE FACILITIES FOR RESEARCH

- Aim:
 - Clustering and sharing research infrastructures in core facilities
 - Increasing the use of research infrastructure (internally and externally)
 - Achieving a higher level of state-of-the-art research infrastructure
- Where relevant, research infrastructure will be set up in centralised buildings
- A professional management support tool (full cost approach, monitoring instrument, lab notebooks, ...)
- Indicators: increased use of occupation of infrastructure, increased level of collaboration

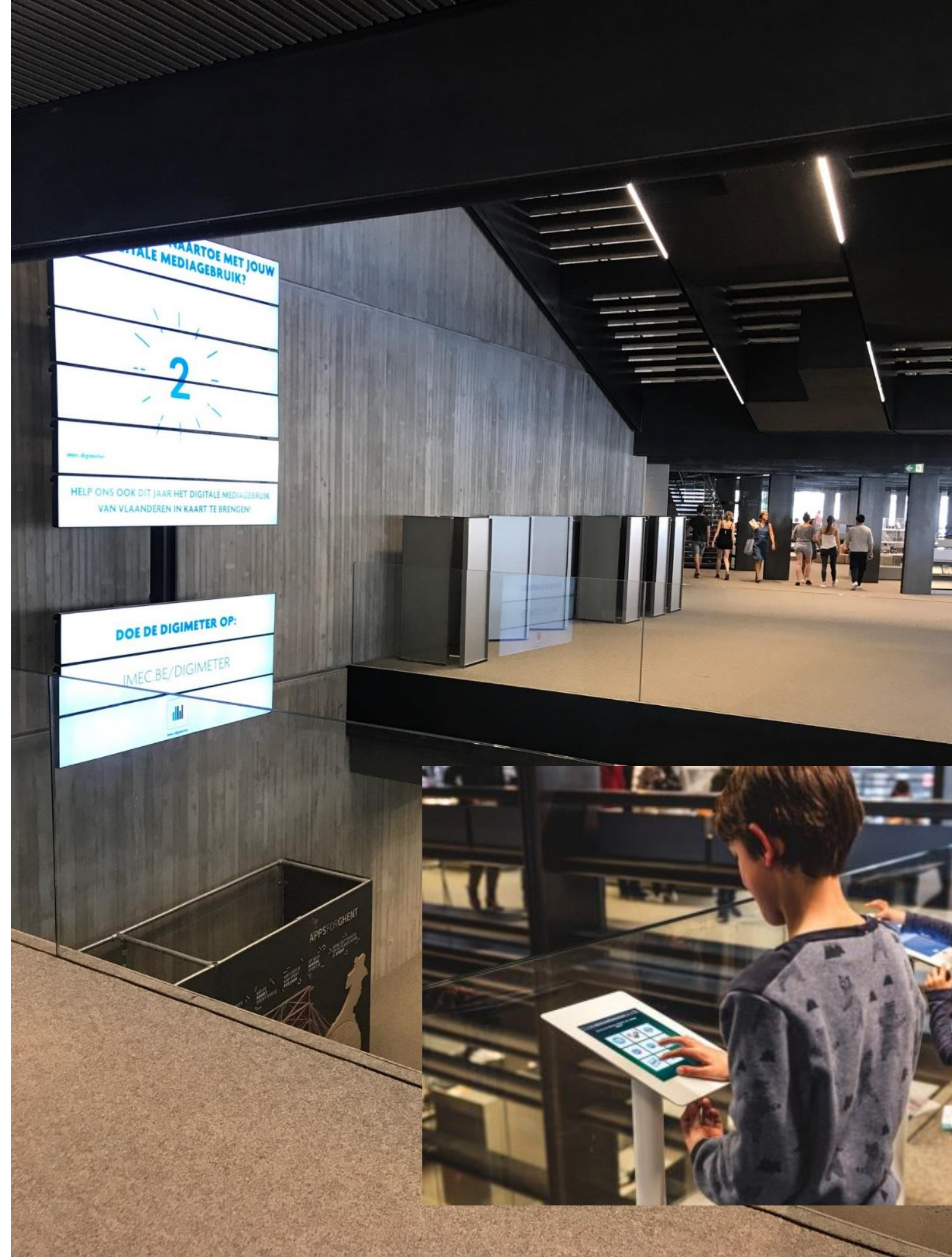
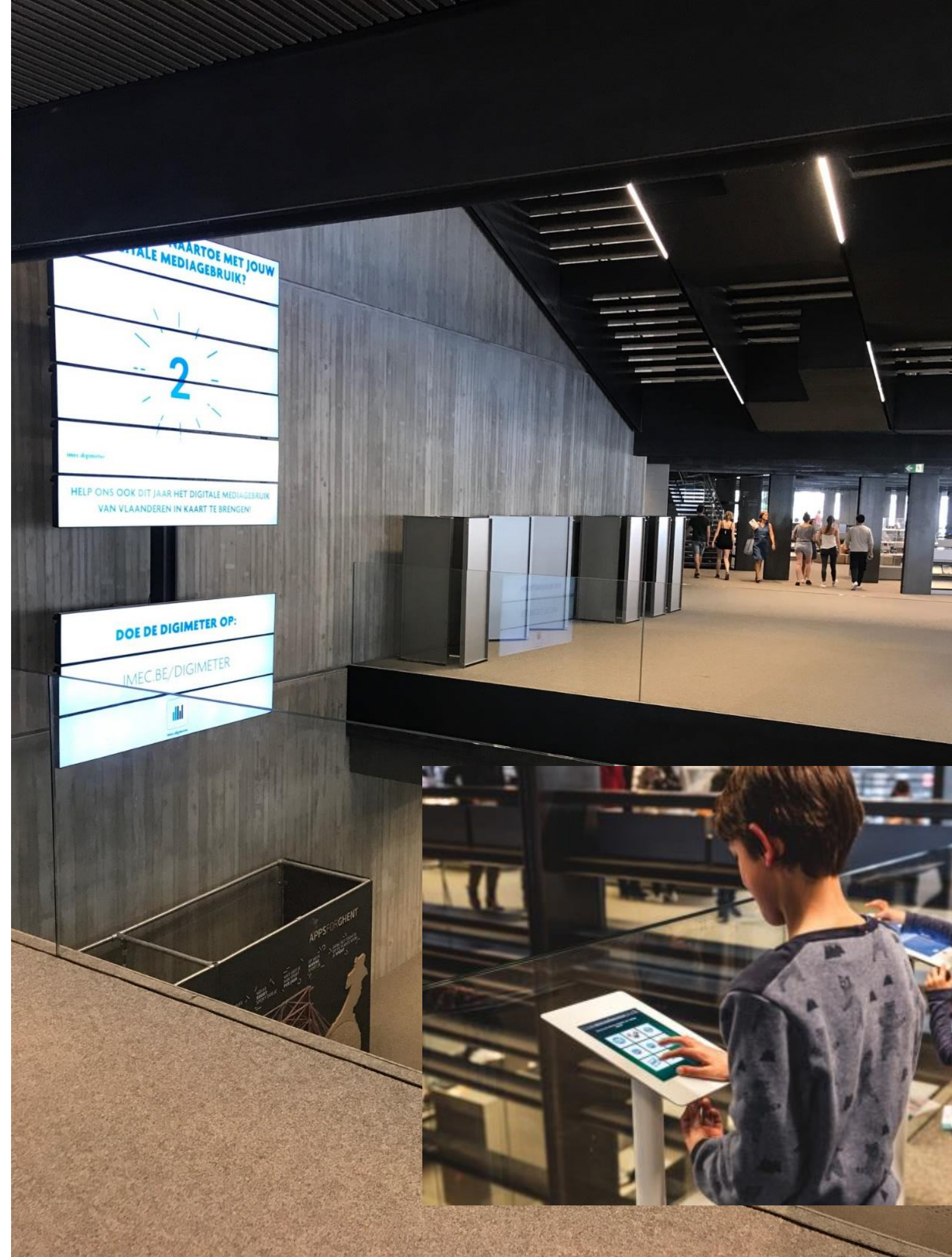
OPTIMIZING THE USE OF SPACE (4)

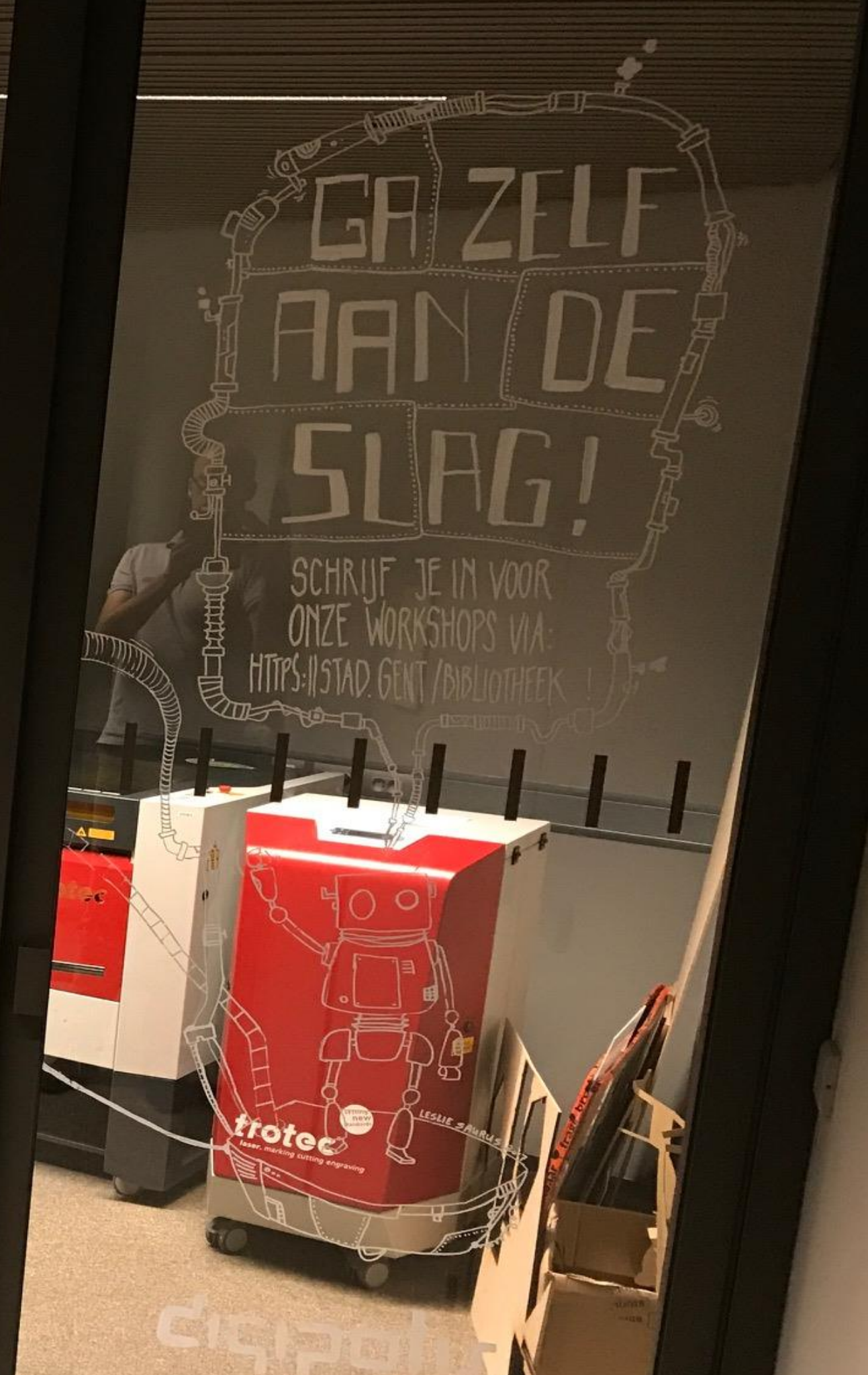
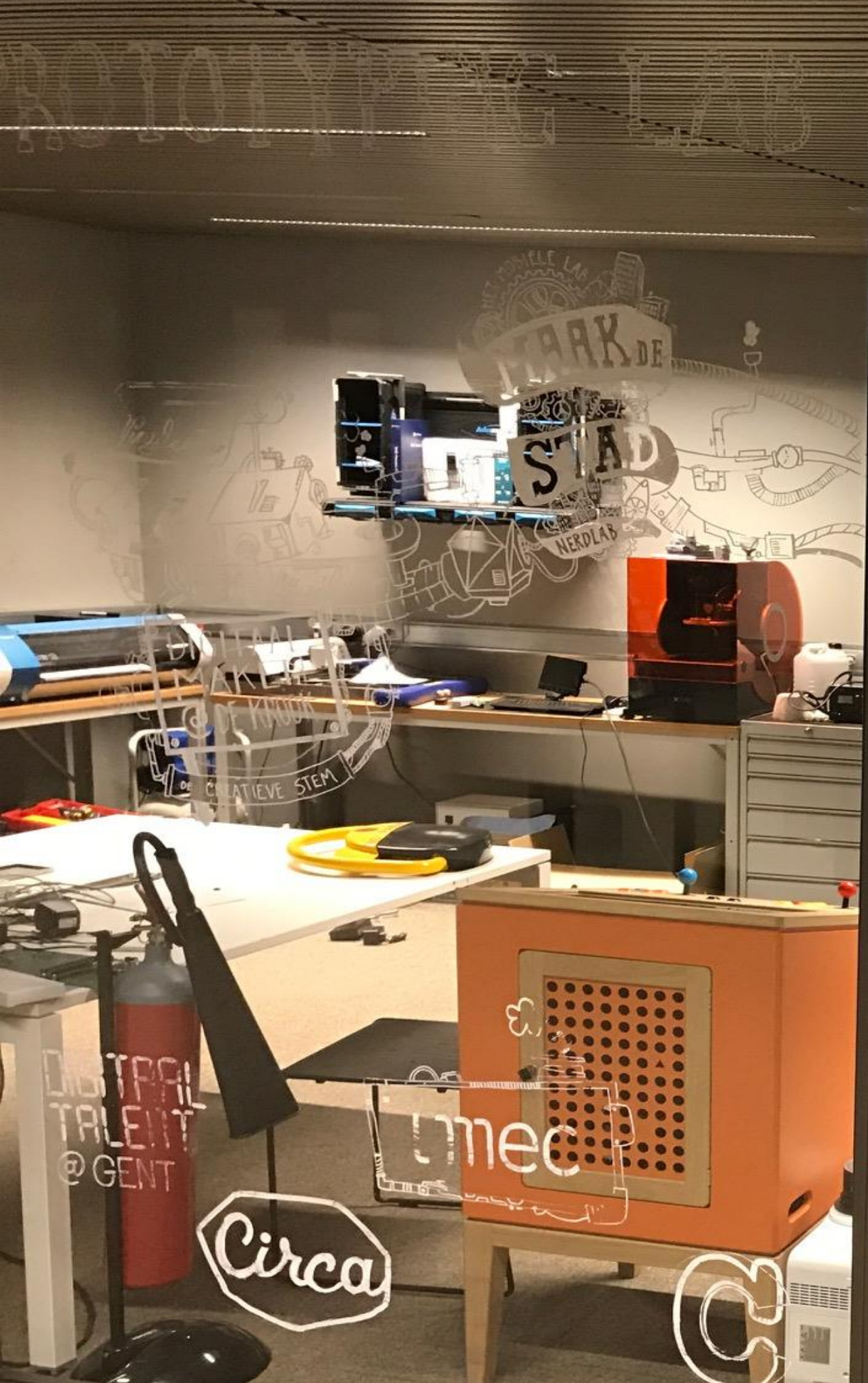
CLOSE PARTNERSHIPS – SHARING FACILITIES

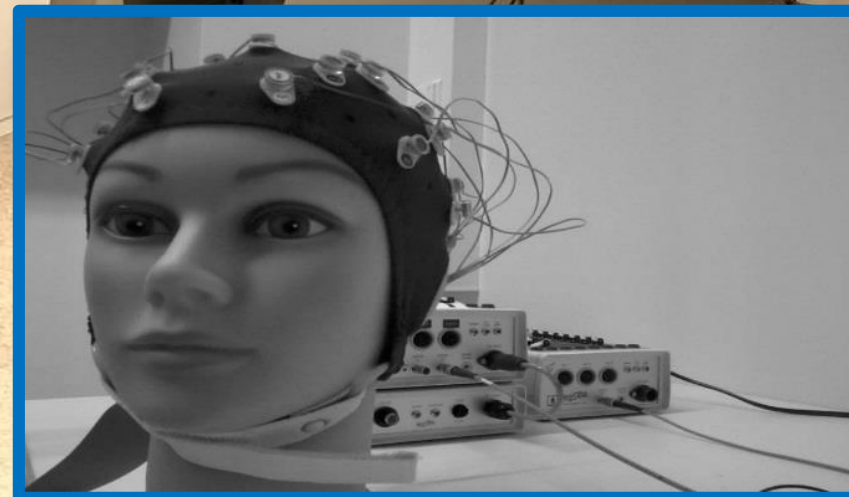
- Aim:
 - Combining efforts with partners in real estate planning
 - Pursuing synergies with activities of partners
- Examples:
 - Shared campuses / facilities with associated university colleges and the university hospital
 - City Library De Krook (Living Lab)
 - Science Park: Tech Lane Ghent Science Park

DE KROOK









TECH LANE GHENT SCIENCE PARK



Tech Lane
Ghent
Science
Park



Jeroen Vanden Berghe

Chief Logistics Administrator

GHENT UNIVERSITY

E jeroen.vandenbergh@ugent.be

T +32 9 264 31 39

www.ugent.be



Ghent University



@ugent



Ghent University