



GOBRA at KU Leuven

Implementing a new method for quality assurance

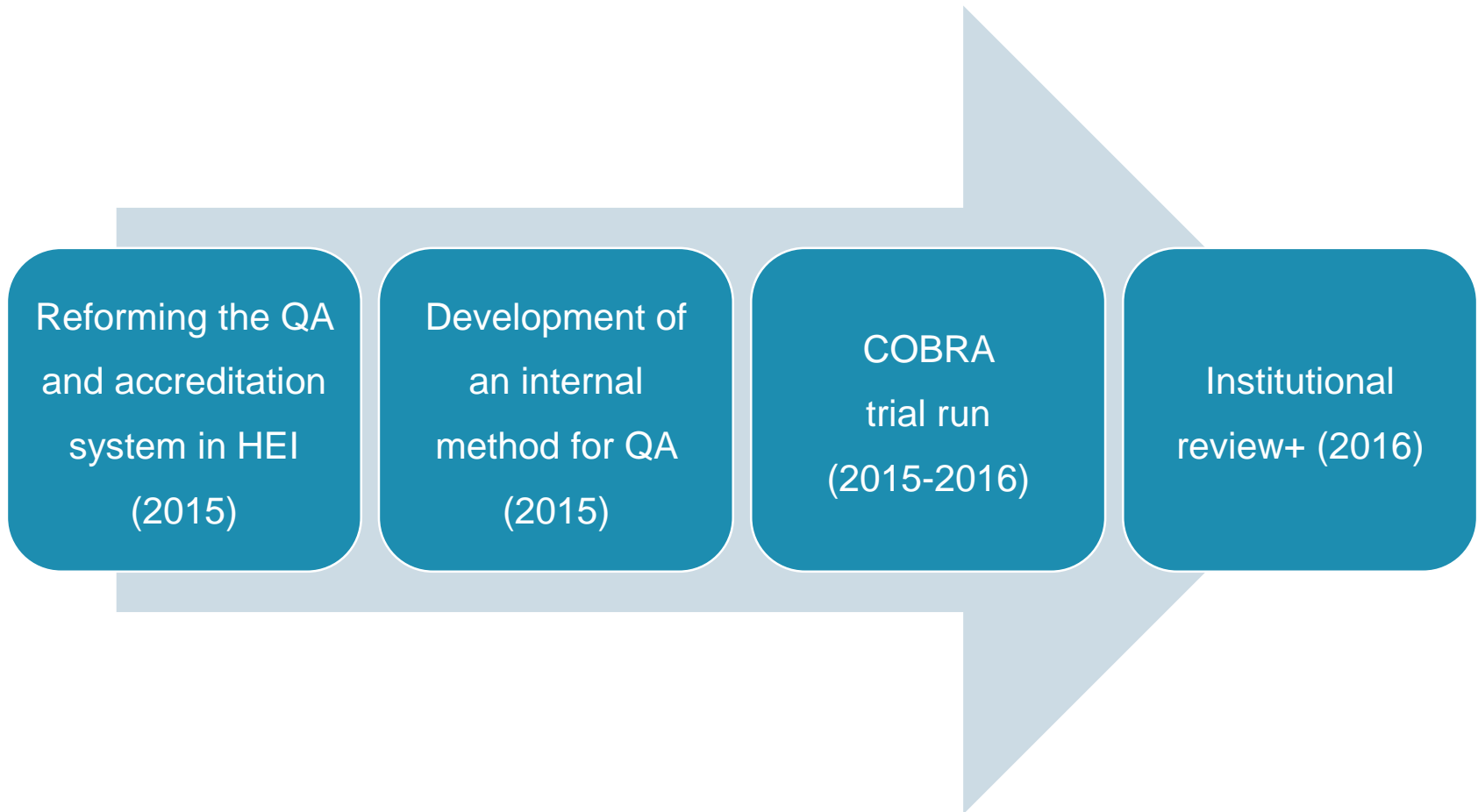
Lessons learned from a trial run

# Overview

- Background of COBRA
- Operation of COBRA
- Challenges and discussion questions

# Background of GOBRA

# QA in HEI in Flanders (2015-2020)



# Operation of GOBRA

# COBRA – say what?

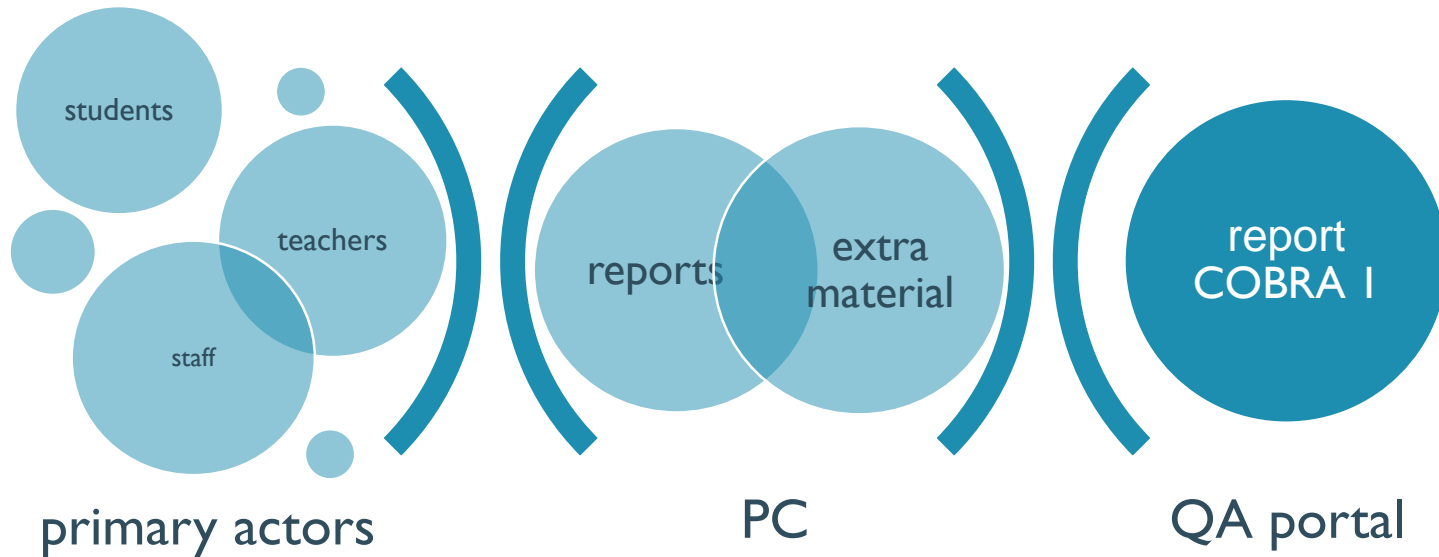
An integral and transparent way of developing educational quality, in dialogue with all stakeholders on three levels of our university.



**COOPERATION**  
**REFLECTION**  
**ACTION**

**CHECKS**  
**BALANCES**

# COBRA 1: level of the PC

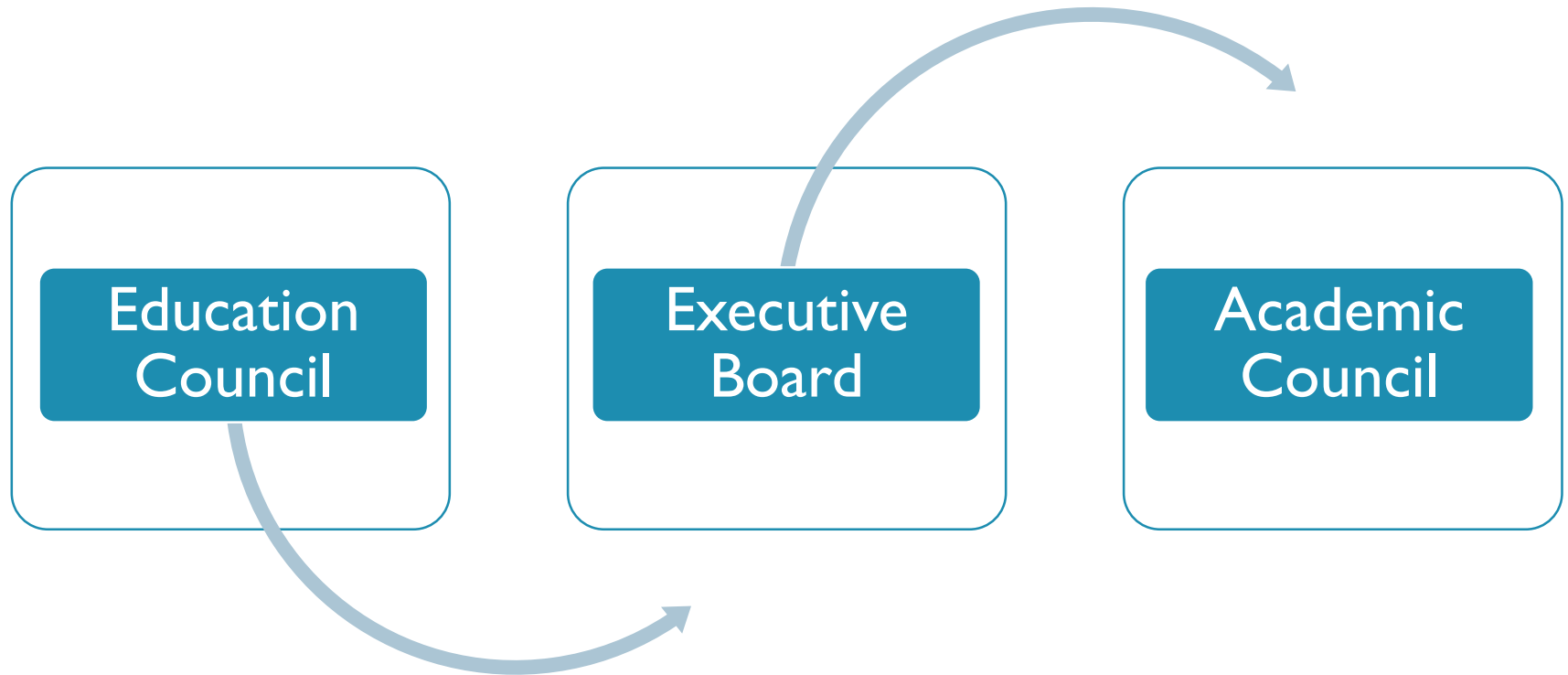


# COBRA 2: level of the faculty





# COBRA 3: level of the university



# Default COBRA cycle

## Year 1 (2019-2020)

- COBRA discussions among students during the second semester
- Processing the results at PC (COBRA 1)

## Year 2 (2016-2017)

- Follow-up of the outcomes of PC discussion
  - Adjustment of preconditions towards faculty and university (COBRA 2 en 3)
- 

## Year 3 (2017-2018)

- COBRA discussions among teachers and staff during the first semester
- COBRA discussions among students during the second semester

## Year 4 (2018-2019)

- Processing at PC together with external peers, professionals and alumni (COBRA1)
- Adjustment of preconditions towards faculty and university (COBRA 2 en 3)

# Communication & transparency



## STUDENT

How do I contribute to the quality of my education programme?

[READ MORE](#)



## LECTURER OR STAFF MEMBER

How do I contribute to the quality of my education programme?

[READ MORE](#)



## PROGRAMME DIRECTOR OR VICE DEAN

What is my role as programme director or vice-dean in COBRA?

[READ MORE](#)



## COBRA STAFF

How can I support COBRA in my faculty?

[READ MORE](#)

## SUPPORT

The Educational Quality Monitoring Unit and the vice rector of Education Policy offer support to implement COBRA within the quality culture at your faculty.

[CONTACT](#)

- [COBRA website](#)
  - Information
  - Support

# Communication & transparency

The screenshot shows the KU Leuven Quality Assurance Portal. At the top, there is a search bar and navigation links for 'QUALITY ASSURANCE PORTAL', 'QUALITY REPORT', 'COBRA', 'INSTITUTIONAL REVIEW', and 'INSTRUMENTS'. The main heading is 'TRANSPARENCY ABOUT THE EDUCATIONAL QUALITY AT KU LEUVEN', followed by a sub-heading: 'Curious about the results of our internal quality assurance method COBRA? Have a look at all relevant documents that provide insight in the quality of the university's study programmes.' A prominent button reads 'BROWSE THROUGH THE DOCUMENTS'. Below this, there are three main content blocks: 1. 'COBRA - INTERNAL QUALITY ASSURANCE METHOD' with a circular arrow icon and text explaining COBRA stands for Cooperation, Reflection and Action, with attention for Checks & Balances. 2. 'EXTERNAL QUALITY ASSURANCE' with a lightbulb icon and text stating KU Leuven takes care of and accounts for the quality of its educational policy and quality assurance, listing links for institutional review, programme assessment and accreditation, domain-specific assessment and accreditation, and initial accreditation. 3. 'INSTRUMENTS FOR EDUCATIONAL QUALITY' with a compass icon and text stating KU Leuven has various instruments to monitor and stimulate the development of educational quality, listing links for student surveys, blueprints, and action plans. At the bottom, there are two more sections: 'VISION AND POLICY PLAN EDUCATION AND STUDENTS' and 'PROGRAMME OVERVIEW'.

- Public transparency
- **Quality assurance portal:** all information about QA brought together

[www.kuleuven.be/qualityassuranceportal](http://www.kuleuven.be/qualityassuranceportal)

# Communication & transparency

The screenshot shows the 'QUALITY ASSURANCE PORTAL KU LEUVEN' website. The main heading is 'QUALITY REPORT' with the COBRA logo. A paragraph explains that from the academic year 2015-2016 onwards, the internal quality assurance method COBRA allows the university to assure high educational standards. Below the text are three buttons: 'WHAT AND FOR WHOM', 'GETTING STARTED', and 'FREQUENTLY ASKED QUESTIONS'. There are two search boxes: 'Search for a programme' and 'Search in the reports', both with 'Type a term here' input fields and 'SEARCH' buttons. Below the search boxes is a section 'Browse through the programmes and reports' with a list of faculties and departments, each with a dropdown arrow. The list includes: Faculty of Theology and Religious Studies, Institute of Philosophy, Faculty of Canon Law, Faculty of Law, Faculty of Economics and Business (FEB), Faculty of Social Sciences, Faculty of Arts, Faculty of Psychology and Educational Sciences, Faculty of Science, Faculty of Engineering Science, Faculty of Bioscience Engineering, Faculty of Engineering Technology, Faculty of Architecture, Faculty of Medicine, Faculty of Pharmaceutical Sciences, and Faculty of Kinesiology and Rehabilitation Sciences. A 'University-wide' link is at the bottom.

- **Quality report:**
  - Subsection quality assurance portal
  - Documents about QA of the study programmes

# Challenges and discussion questions

# Questions

1. What are, according to you, necessary conditions/success factors for external stakeholders to make a meaningful contribution to QA?
2. How do you stimulate involvement/engagement among students and teachers vis-à-vis QA?
3. Do you recognize the need to/call for more ownership over QA among teachers and teaching committees in your institution? If so, how do you deal with this?