

PEDRALBES & UPPER BARCELONA

Palau Reial & Pavellons Güell

This historic palace was once the residence of the Spanish Royal Family when they visited the city. From there head to Pavellons Güell, located nearby. Designed by the renowned architect Antoni Gaudí, these pavilions showcase his unique architectural style.



Monestir de Pedralbes

This medieval monastery offers a tranquil retreat from the bustling city streets. Visit the monastery church, cloister, and the Museum of the Monastery of Pedralbes



Sarrià

Charming neighborhood. We suggest to walk to "Plaça de Sarrià" and from there walk down "Major de Sarrià" street enjoying its charming atmosphere. There, you may enjoy the renowned "Patatas bravas" at "El Bar Tomás".

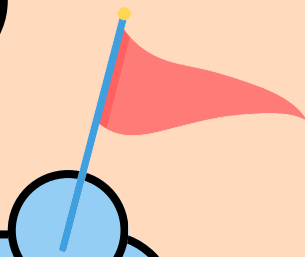


Cosmocaixa

This science museum offers interactive exhibits on topics such as nature, science, and space

Mirablau & Tibidabo

Enjoy a scenic route with the Tranvia Blau leading to Mirablau and stop for a drink with breathtaking views over the city or continue uphill to Tibidabo.



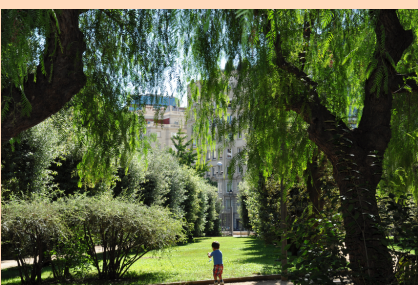
Barça

Parc de Cervantes

This beautiful park features lush greenery, meandering pathways, and a collection of over 200 varieties of roses.

Barça Museum

If you are a fan, consider visiting the Barça Museum at Camp Nou, the stadium of FC Barcelona (currently under work). Here, you can learn about the history of one of the world's most famous football clubs and explore the trophy room



La Illa Diagonal

This modern shopping mall offers a wide range of shops, restaurants, and entertainment options.

Turo Parc

A nice park in the upper Barcelona, with elegant buildings, boutique shops, and cozy cafes, around providing a glimpse into the local lifestyle.

BARCELONA WALKING TOUR: PEDRALBES & UPPER BARCELONA

A walking tour, starting from the Conference venue and providing different options depending on your tastes.

Start your itinerary by visiting:

Palau Reial

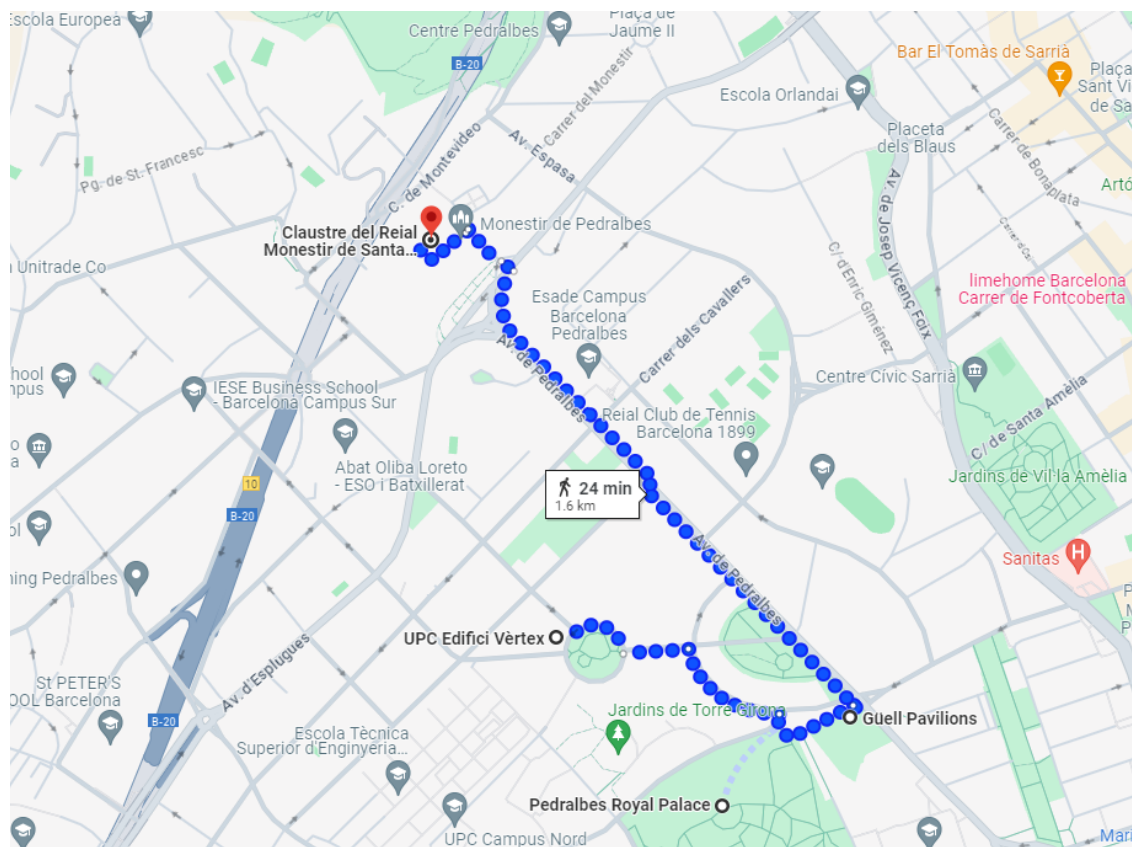
Begin your tour at Palau Reial de Pedralbes. This historic palace was once the residence of the Spanish Royal Family when they visited the city. Take some time to explore the gardens and the exterior of the palace.

Pavellons Güell

From Palau Reial, head to Pavellons Güell, located nearby. Designed by the renowned architect Antoni Gaudí, these pavilions showcase his unique architectural style. Explore the intricate details and innovative designs of these structures.


Monestir de Pedralbes

After visiting Pavellons Güell, make your way to Monestir de Pedralbes. This medieval monastery offers a tranquil retreat from the bustling city streets. Visit the monastery church, cloister, and the Museum of the Monastery of Pedralbes, which houses a collection of medieval art and artifacts.



If you want to go on from there we propose two different options:

a) Sarrià

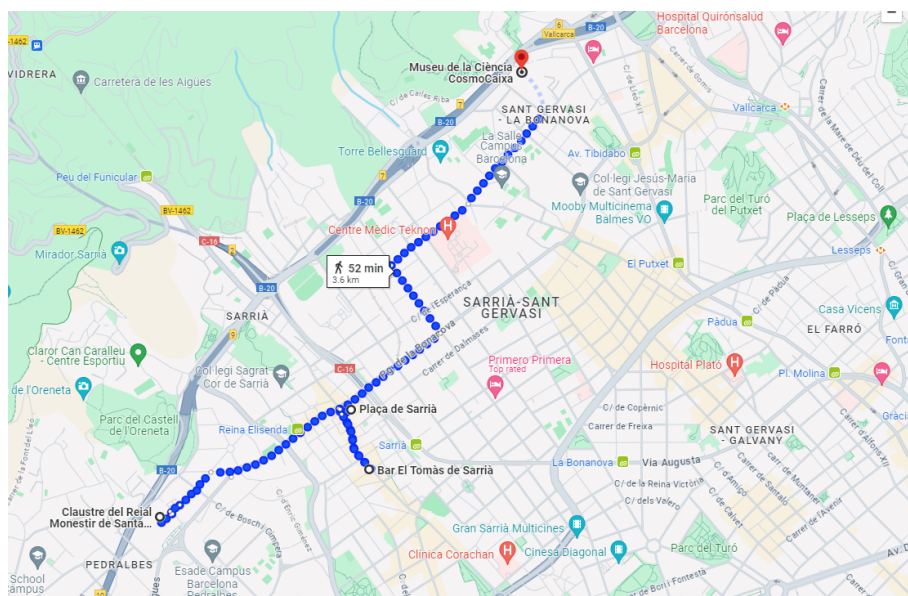
This charming neighborhood is known for its narrow streets, historic buildings, and local shops and restaurants. Take a leisurely stroll through Sarrià to soak in its picturesque atmosphere and discover hidden gems. We suggest to walk to “Plaça de Sarrià” and from there walk down “Major de Sarrià” street enjoying its charming atmosphere. There, you may enjoy the renowned “Patatas bravas” at “El Bar Tomás”. In case that you want to go to the city center from there, you can easily take the metro “Ferrocarrils de Sarrià”  “Sarrià Stop”.

If you wish to continue your visit in the high part of Barcelona you may pay a visit to:

CosmoCaixa Barcelona: This science museum offers interactive exhibits on topics such as nature, science, and space. It's a great place to explore for both children and adults.

To enjoy a nice sightseeing over the city: To enjoy a scenic route with the Tranvia Blau leading to Mirablau or Tibidabo in Barcelona, follow these steps:

- **Start at Plaça Kennedy:** Begin at Plaça Kennedy, the starting point of the Tranvia Blau. Here, you'll board the vintage blue tram that will take you on a picturesque ride.
- **Tranvia Blau Ride:** Enjoy the charming tram ride and the beautiful architecture as it ascends through the tree-lined avenues of Avinguda del Tibidabo.
- **Mirablau Stop:** If you're heading to Mirablau, disembark at the Mirablau stop. From here, you can enjoy panoramic views of the city while sipping on drinks or dining at the Mirablau restaurant terrace.
- **Continuing to Tibidabo:** If you wish to continue to Tibidabo, stay on the Tranvia Blau until its final stop at Plaça del Doctor Andreu. From there, take the Tibidabo Funicular or walk uphill to reach the Tibidabo Amusement Park and the iconic Tibidabo Mountain.
- **Tibidabo Views:** Once at Tibidabo, take in breathtaking views of Barcelona from the mountain's summit. You can also explore the amusement park, visit the Sagrat Cor church, or simply soak in the stunning vistas before heading back down.



b) This option will take you to:

Parc de Cervantes

If you're looking for a peaceful retreat, consider walking through Parc de Cervantes. This beautiful park features lush greenery, meandering pathways, and a collection of over 200 varieties of roses.

Barça Museum (Camp Nou)

If you have time and are interested in football, consider visiting the Barça Museum at Camp Nou, the stadium of FC Barcelona (currently under work). Here, you can learn about the history of one of the world's most famous football clubs and explore the trophy room.

La Illa Diagonal

This modern shopping mall offers a wide range of shops, restaurants, and entertainment options. It's a convenient place to take a break and do some shopping or grab a bite to eat.

Turo Parc

You may finish your stroll in this that oasis in the middle of the city. This park features lush greenery, tranquil ponds, and shaded pathways. Surrounding the park, visitors can explore charming streets lined with elegant buildings, boutique shops, and cozy cafes, providing a glimpse into the local lifestyle.

